

---

# Exchange Rate Predictability and State-of-the-Art Models

Pinar Yeşin

SNB Working Papers

2/2016



# Legal Issues

---

## **DISCLAIMER**

The views expressed in this paper are those of the author(s) and do not necessarily represent those of the Swiss National Bank. Working Papers describe research in progress. Their aim is to elicit comments and to further debate.

## **COPYRIGHT©**

The Swiss National Bank (SNB) respects all third-party rights, in particular rights relating to works protected by copyright (information or data, wordings and depictions, to the extent that these are of an individual character).

SNB publications containing a reference to a copyright (© Swiss National Bank/SNB, Zurich/year, or similar) may, under copyright law, only be used (reproduced, used via the internet, etc.) for non-commercial purposes and provided that the source is mentioned. Their use for commercial purposes is only permitted with the prior express consent of the SNB.

General information and data published without reference to a copyright may be used without mentioning the source. To the extent that the information and data clearly derive from outside sources, the users of such information and data are obliged to respect any existing copyrights and to obtain the right of use from the relevant outside source themselves.

## **LIMITATION OF LIABILITY**

The SNB accepts no responsibility for any information it provides. Under no circumstances will it accept any liability for losses or damage which may result from the use of such information. This limitation of liability applies, in particular, to the topicality, accuracy, validity and availability of the information.

ISSN 1660-7716 (printed version)  
ISSN 1660-7724 (online version)

© 2016 by Swiss National Bank, Börsenstrasse 15,  
P.O. Box, CH-8022 Zurich

# Exchange Rate Predictability and State-of-the-Art Models\*

PINAR YEŞİN\*\*

March 2016

**Abstract:** This paper empirically evaluates the predictive performance of the International Monetary Fund's (IMF) exchange rate assessments with respect to future exchange rate movements. The assessments of real trade-weighted exchange rates were conducted from 2006 to 2011, and were based on three state-of-the-art exchange rate models with a medium-term focus which were developed by the IMF. The empirical analysis using 26 advanced and emerging market economy currencies reveals that the 'diagnosis' of undervalued or overvalued currencies based on these models has significant predictive power with respect to future exchange rate movements, with one model outperforming the other two. The models are better at predicting future exchange rate movements in advanced and open economies. Controlling for the exchange rate regime does not increase the predictive power of the assessments. Furthermore, the directional accuracy of the IMF assessments is found to be higher than market expectations.

**Keywords:** Exchange rate models; exchange rate assessment; predictability; equilibrium exchange rates.

**JEL Classification:** C53, F31, F37

---

\* I would like to thank an anonymous referee, Gustavo Adler, Adrien Alvero, Philippe Bacchetta, Andreas Fischer, Atish Rex Ghosh, Christian Grisse, Gian-Maria Milesi-Ferreti, Christopher J. Neely, Steven Phillips, Cédric Tille, seminar participants at the Swiss National Bank, the Central Bank of Turkey and the International Monetary Fund, conference participants at the 2014 Conference of the Swiss Society of Economics and Statistics in Berne and at the 2014 CEPR-SNB Conference on Exchange Rates and External Adjustment in Zurich for their helpful comments and discussions. I also thank the International Monetary Fund, which provided information, data, and permission that made this research project possible. Adrien Alvero, Elisabeth Beusch, and Henrike Groeger provided excellent research assistance during different stages of this project. Any remaining errors are my own. The views expressed in this paper are those of the author and do not represent those of the Swiss National Bank or the International Monetary Fund.

\*\* E-mail: pinar.yesin@snb.ch. Swiss National Bank, Börsenstrasse 15, P.O. Box, CH-8022 Zurich, Switzerland.

## 1. Introduction

One of the most fascinating fields in international macroeconomics has been the explanation of the past behavior of exchange rates and the subsequent prediction of their future movements. Various theoretical and empirical papers have been written on the topic, most notably by Meese and Rogoff (1983a and 1983b). The common view is that, in the long run, exchange rates are to some extent determined by macroeconomic fundamentals, but in the short run a random walk outperforms a range of fundamentals-based models of exchange rates. Order flow models, on the other hand, have some predictive power in the short run; see, for example, Evans and Lyons (2006).

Remarkably, various institutions invest significant resources in developing state-of-the-art models to estimate equilibrium exchange rates, assess their current values for overvaluation or undervaluation, and predict their future paths. In particular, the International Monetary Fund (IMF) has been at the frontier of research on medium-term exchange rate models. This is understandable in view of the IMF's primary purpose of ensuring the stability of the international monetary system—the system of exchange rates and international payments that enables countries and their citizens to conduct transactions with each other. In order to fulfill its mandate, the IMF has developed various vintages of state-of-the-art exchange rate models since at least 1997 (probably even earlier) and has been using these models to assess exchange rates as part of its regular surveillance process.<sup>1</sup> Earlier and current vintages of exchange rate models developed by the IMF are explained in detail in numerous IMF publications, such as Isard and Faruquee (1998), Isard, Faruquee, and Kincaid (2001), Lee et al (2008), and Phillips et al (2013), among others.

The purpose of this paper is to empirically evaluate the predictive performance of one particular vintage of IMF exchange rate models for subsequent exchange rate movements over a variety of horizons. In particular, during 2006–2011, the IMF's Consultative Group on Exchange Rate issues (CGER) employed three state-of-the-art models to assess real trade-weighted exchange rates for 27 advanced and emerging market economies on a semi-annual basis. The CGER models complemented each other in different ways. Each of them computed an equilibrium real

---

<sup>1</sup> Exchange rate assessments are also critical from the viewpoint of individual countries, since these assessments constitute the basis of the discussions at the annual Article IV consultations regarding other macroeconomic indicators.

effective exchange rate (REER) based on the medium-term outlook for macroeconomic fundamentals. The difference between the current REER and the equilibrium REER was called misalignment and gave the percentage overvaluation or undervaluation of the currency in question. The IMF, in general, took the average of the misalignments specified by each model to define its final assessment of the currency. The assessments abstracted from short-term fluctuations by taking a medium-term perspective based on five-year outlook values as the determinants of exchange rates. In other words, the assessments did not evaluate nominal exchange rates in the short run. Furthermore, these assessments were multilaterally consistent. The CGER published an internal and strictly confidential document<sup>2</sup> summarizing its assessments semi-annually and the IMF used the assessments as input in the annual Article IV discussions with national authorities.<sup>3,4</sup>

Remarkably, these exchange rate assessments resembled predictions for future exchange rate movements, because the models made use of five-year outlook values for macroeconomic variables when calculating equilibrium exchange rates. In fact, the calculated equilibrium exchange rate was the medium-term outlook for the exchange rate. The IMF also explicitly stated this feature of the assessments in its confidential document as follows:

*“An assessment of undervaluation or below equilibrium (overvaluation or above equilibrium) implies that the currency is expected to appreciate (depreciate) over the medium term.”*

Naturally, questions arise as to whether assessments based on these models could correctly predict subsequent exchange rate movements. Indeed, this paper aims to answer the following questions. Did currencies which were identified as undervalued (overvalued), actually appreciate (depreciate) following the assessment? Are all models used by the IMF equally

---

<sup>2</sup> The document was called “IMF Office Memorandum on Exchange Rate Assessments for Selected Advanced and Emerging Market Economies”.

<sup>3</sup> CGER exchange rate assessments were classified by the IMF as “Strictly Confidential”, due to the potential market sensitivity of IMF views on exchange rate misalignments. Note also that the CGER assessments did not necessarily reflect the IMF’s official view on exchange rates, see Lee et al. (1998), footnote 2. On the other hand, most of the recent individual currency misalignment information can be found in the relevant Article IV Consultation – Staff Reports which are publicly available on the IMF website. The IMF gave the author of this paper special permission to use the dataset of CGER assessments for research purposes. Nevertheless, in this paper, single countries’ past assessments are not stated individually. Similarly, the exact dates of these assessments are not identified.

<sup>4</sup> From 2012 onwards, the IMF used the External Balance Approach (EBA) methodology to assess exchange rates. The EBA models are revised versions of the CGER models, where the business cycle and divergence from optimal policies are taken into account; therefore, the normative assessments no longer qualify as predictions in the medium term.

successful in predicting subsequent exchange rate movements? Is the predictive performance of the assessments higher in advanced and/or open economies? Does the exchange rate regime matter for the exchange rate adjustment towards the equilibrium value?

A simple statistical analysis is conducted in this paper to answer these questions. In particular, subsequent changes in the REER are regressed on the IMF assessments. In the baseline model, other explanatory variables are not included because the assessments, in theory, incorporate all the macroeconomic information available at the time of the assessment.

The empirical analysis reveals that the IMF “diagnosis” of undervalued or overvalued currencies had significant predictive power with regard to future exchange rate movements. One of the CGER models, a reduced-form model of the exchange rate as a function of relative productivity and other factors, outperformed the other two models in predicting future exchange rate movements as well as the average IMF assessment.

Furthermore, the statistical analysis finds that the IMF assessments had a higher predictive power for future exchange rate movements in advanced economies than for such movements in emerging market economies. This may be due to the availability of more detailed and quality data for advanced economies when drawing up medium-term outlooks for the macroeconomic variables used in the exchange rate assessment. Or it may be due to the higher volatility of macroeconomic variables in emerging market economies. Likewise, the IMF assessments had higher predictive performance in open economies than in closed economies. In other words, international trade probably plays an important role in the external adjustment mechanism of exchange rates. Interestingly, controlling for the exchange rate regime does not yield different results. Only at the shortest horizon of 6 months is the exchange rate regime crucial for external adjustment.

One noteworthy feature of the sample period is that it includes the global financial crisis of 2007–2008. This makes it possible to test whether the widespread exchange rate corrections that took place during and after the crisis can be explained by the IMF’s state-of-the-art models, and whether they were predicted correctly in advance. Therefore, individual assessments are studied separately. The analysis is especially relevant in the context of the ubiquitous discussion on global imbalances, because two of the state-of-the-art models are based on estimating equilibrium current account balances. The data analysis indicates that the assessments made

before the onset of the crisis have been equally successful in predicting exchange rate movements as the assessments undertaken after the crisis.

This paper contributes to the slim literature on the predictive power of medium-term exchange rate models for future exchange rate movements. In a related paper, Abiad et al. (2009) evaluate the predictive power of the IMF's earlier vintage of exchange rate models. They find that the earlier vintage's assessments from 1997 to 2006 have some predictive power with respect to future real effective exchange rate movements, in particular, if subsequent revisions to the macroeconomic outlook are controlled for. However, their panel analysis includes a much smaller sample with only 11 industrialized economies, because emerging market economies' currencies were not assessed before 2006. Furthermore, the earlier vintage consists of only two exchange rate models. In fact, the IMF developed its CGER assessments further and extended the sample of countries/currencies in 2006. In this study, a more comprehensive dataset is used, including several important emerging market economies along with advanced economies, as well as a broader set of exchange rate models. This makes the analysis of advanced versus emerging market economies, as well as open versus closed economies possible.

The paper is organized as follows. Section 2 describes the data, while section 3 lays out the empirical analysis and various robustness checks. Section 4 concludes.

## **2. Data**

In this section the data and the underlying exchange rate models of the IMF are described.

The exchange rate assessments are taken from the semi-annual strictly confidential IMF *Office Memorandums* on the Exchange Rate Assessments for Selected Advanced and Emerging Market Economies. There were eleven CGER assessments in total, between 2006 and 2011. The documents report on 27 currencies, 17 of which correspond to an emerging market economy according to the World Economic Outlook classification.<sup>5</sup> In this paper, one emerging market economy is dropped from the original sample due to missing data on other variables needed to conduct the empirical analysis.

---

<sup>5</sup> Note that the underlying exchange rate models were applied to about 48–54 countries. These countries encompassed the “world”, i.e. they were the most important countries in global trade and covered about 90 percent of world GDP. However, the Office Memo only reported the assessments for 27 countries' currencies.

The three CGER models used by the IMF between 2006 and 2011 to assess exchange rates are the following:

1. Macroeconomic Balance approach (MB): Relies on estimating an equilibrium current account based on the absorption approach;
2. Equilibrium Real Exchange Rate approach (ERER): Relies on a reduced form equation of the real effective exchange rate based on macroeconomic fundamentals;
3. External Sustainability approach (ES): Relies on estimating an equilibrium current account that would stabilize net foreign asset position.

These three models complement each other in various different ways. They have their own advantages and disadvantages. Information on each exchange rate model is provided briefly in Appendix A.

Each model yields an independent misalignment value for the exchange rate, i.e., the percentage overvaluation or undervaluation of the currency in question. The IMF's final assessment of the currency was generally defined as a simple average of these three misalignment values.<sup>6</sup> This average assessment is denoted as *IMF Misalignment* in this paper. Thus *MB Misalignment*, *ERER Misalignment*, *ES Misalignment*, and *IMF Misalignment* are the assessment variables in the empirical analysis. There are two missing values for the *ERER Misalignment* in the sample, and therefore the *IMF Misalignment* has also two missing observations. Thus the sample has a total of 286 observations each for the *MB Misalignment* and *ES Misalignment* variables, and 284 observations each for the *ERER Misalignment* and *IMF Misalignment* variables.

The real effective exchange rate (REER) data is taken from the BIS, and covers the period fall 2006 – fall 2014. Broad indices based on a large basket are used. Changes in the natural logarithm of the REER,  $\Delta \ln REER$ , is the dependent variable in the empirical analysis, and is calculated over various horizons.<sup>7</sup>

---

<sup>6</sup> When the models gave rise to misalignment values in opposite directions which diverged by 5 percent or more, the IMF's final assessment of the currency was less specific and usually provided a wide range of values for the misalignment. In this paper, simple average of the models' misalignment values are used as the *IMF Misalignment*, even if the final assessment of the IMF indicated a range.

<sup>7</sup> Log returns, rather than simple returns, on the exchange rate are used in the analysis because the IMF misalignment variables are also expressed in logarithms.



In this study, six different horizons are considered for the adjustment of the REER following the IMF assessment: 6-month, 1, 2, 3, 4, and 5-year horizons. On the one hand, shorter horizons might be too short for the exchange rate to adjust and move towards its equilibrium value. On the other hand, longer horizons make the initial assessments less relevant since the underlying macroeconomic variables as well as their outlooks can change, thereby, in due course, also affecting the equilibrium REER. Therefore, the misalignments that the models predict are vulnerable to future modifications if longer horizons are considered. Furthermore, there is no theoretical basis regarding the time it would or should take the exchange rates to move towards their equilibrium values.<sup>8</sup>

Information on the de facto exchange rate regime of countries in the sample is taken from the IMF's *Annual Report on Exchange Arrangements and Exchange Restrictions* (AREAER). Countries which are classified by the AREAER as having a floating or free floating exchange rate arrangement in a given year are controlled for in the statistical analysis with a dummy variable. This is a stringent criterion for the speed of external adjustment.

Appendix B gives the list of countries and assessment periods as well as the list of variables used in the statistical analysis.

### **3. Empirical Analysis**

#### **3.1. Bivariate analysis without fixed effects**

Figure 1 illustrates four panels. Each panel shows a scatter plot of the two-year-ahead changes in the logarithm of the REER after an assessment together with a misalignment variable. The top left panel illustrates the *IMF Misalignment*. All 284 observations in the sample are shown. If the *IMF Misalignment* can predict the directional movements of future exchange rates, a negative slope is expected. Furthermore, the observations in the upper-left and lower-right quadrants are accurate in predicting the direction of the exchange rate. This area accounts for 61 percent of the observations in the top left panel. Thus, 61 percent of the time, the *IMF Misalignment* diagnosis was accurate regarding the direction of the REER after two years. A more stringent criterion specifies that if the IMF is spot on with its assessment, and if the whole

---

<sup>8</sup> Lee et al (2008) estimated a long-run EREER model with an error-correction specification and found that half of the misalignment gap of the EREER model is expected to close after two and a half years. There is no corresponding half-life estimate for the MB or ES models.

adjustment takes place in 2 years, the slope should equal  $-1$ . The simple linear fit without a constant and with robust errors clustered on the country level has a slope of  $-0.18$ , and is statistically significant at the 5 percent level. This means that, on average, only 18 percent of the *IMF Misalignment* gap was closed after two years (if country-specific variables were not taken into account).

The remaining panels in Figure 1 show scatter plots of the assessments based on the three CGER models and the two-year-ahead log changes in the REER after the assessment. Note that there is a large variation in the exchange rate assessments for all three models considered. Furthermore, the subsequent exchange rate movements also show a wide range. However, they appear to cluster closer to zero than do the exchange rate assessments. The greater standard deviations of the exchange rate assessments may be due to the fact that two years is too short for a complete exchange rate adjustment predicted in the medium term. Table 1, in which averages and standard deviations of the misalignment variables and the subsequent exchange rate changes are listed, illustrates this point.

The coefficient of the linear fit is statistically different from zero in all three cases. However, the *ES Misalignment* scores poorest. The coefficient of the linear fit of the *ES Misalignment* is only  $-0.10$ . Furthermore, there are many outlier observations in the upper right quadrants for the *MB* and *ES Misalignments*. In other words, there are several currencies which were diagnosed as significantly overvalued by the MB and ES approaches but continued to appreciate afterwards. On the other hand, the *ERER Misalignment* scores relatively better. There are relatively fewer outliers in the upper right quadrant and the coefficient of the linear fit is  $-0.16$ , implying that 16 percent of the misalignment of the exchange rate was closed within the next 2 years. Thus at a first glance, the predictive power of the ERER approach for future exchange rate movements within the two-year horizon seems to be higher than the other two models.<sup>9</sup>

Table 2 summarizes the coefficients of linear fit and directional accuracies of the misalignment measures for all horizons considered in the analysis. As expected, the predictive power of the models generally increases with the length of the horizon. The linear fit coefficients for all three

---

<sup>9</sup> Although the MB and ES approaches are quite different from each other methodologically, they tend to give similar assessments. The simple correlation between the *MB Misalignment* and *ES Misalignment* in the sample is 0.83. The similar assessments are, to some extent, due to these models' implicit assumption that current account gaps are closed solely via the goods trade channel facilitated through an exchange rate adjustment. However, equilibrium current accounts are calculated completely differently.

misalignment estimates are negative and statistically significant for shorter horizons. Table 2 shows that the directional accuracy of the assessments increases with the horizon for all misalignment variables. On the other hand, the linear fit coefficients increase only up to the 4-year horizon. At a first glance, there are some differences between the predictive performances of the three IMF models when country specific factors are not taken into account, particularly when the horizon gets longer.

Are there any currencies for which the models made persistent errors in predicting the direction of the future exchange rate movements? In other words, are there currencies which appreciated (depreciated) more than 5 percent “too many times”, following a diagnosis either of being in line with fundamentals or overvaluation (undervaluation) during the sample period? A closer look at the sample reveals that there is one advanced economy currency and one emerging market economy currency for which all three models were significantly wrong regarding the direction of the subsequent exchange rate movement over the 2-year horizon for at least four assessments.<sup>10</sup>

Furthermore, contrary to the bivariate regression results, the *ES Misalignment* makes persistent errors (four or more times) over the 2-year horizon for the smallest number of currencies, i.e. only two, whereas the *ERER Misalignment* makes a persistent error for the greatest number of currencies, i.e. seven. The *MB Misalignment*, on the other hand, predicts persistently incorrectly over the 2-year horizon for four currencies. These persistent errors in predicting the direction of the subsequent exchange rate movements explain why, in the next subsection, there is a much higher predictive power of assessments as well as a better fit for the data panel estimations with fixed (currency) effects. It is also worth noting that there are two emerging market economies where all the assessments for all three models during the sample period were spot on in terms of direction over the 2-year horizon.

### **3.2. Panel estimations with fixed effects**

Next, panel regressions with fixed effects are carried out to control for the cross-country differences in the sample. Table 3 shows OLS regressions of log returns in the *REER* two years ahead on each of the four misalignment variables separately, namely *IMF Misalignment*, *MB*

---

<sup>10</sup> For reasons of confidentiality, these currencies are not identified in the paper.

*Misalignment*, *ERER Misalignment*, and *ES Misalignment*. Errors are clustered at currency level.

Table 3 supports the conjecture of the previous subsection that the IMF ‘diagnosis’ of undervalued or overvalued currencies has some explanatory power in predicting directional movements in the REER. All coefficients on the misalignment variables have negative signs and are statistically significant. Furthermore, controlling for fixed effects increases the predictive power of the assessments significantly, as mentioned in the previous subsection. This finding confirms that assessments of REER undervaluation (overvaluation) are followed by subsequent appreciation (depreciation) of the REER, independent of the model used for the assessment. For example, the coefficient of the *IMF Misalignment* variable has the value 0.58. That is, 58 percent of the misalignment gap is closed after 2 years when country specific factors are taken into account. The predictive performance of the IMF assessment, however, is explained to a large extent by the predictive performance of the ERER model. Assessments based on the ERER model have the highest coefficient value in absolute value, together with the highest R-square (albeit still relatively low at 0.30). According to the estimation, 59 percent of the misalignment gap diagnosed by the ERER model is closed after two years if we control for country effects. On the other hand, the predictive power of the MB and the ES assessments is considerably weaker with lower R-square and lower coefficient values. This evidence suggests that the predictive power of the *IMF Misalignment* is due to the high predictive power of the *ERER Misalignment*.

Results for the other horizons are illustrated in Table 4. Observations made for the 2-year horizon continue to hold for the other horizons. All misalignment variables have considerable predictive power for future exchange rate movements. All coefficients are negative and statistically significant. However, the *ERER Misalignment* regression continues to have the highest R-square values. Furthermore, it delivers the highest coefficient values in absolute value for all horizons considered among the three misalignment variables. It is also worth noting that the explanatory power of the misalignment variables increases, to a large extent, with the length of the horizon until it has reached four years, and then decreases slightly over the 5-year horizon. Based on the estimation results, 93 percent of the misalignment gap diagnosed by the IMF is closed after four years if we control for country effects.

### 3.3. Controlling for the exchange rate regime

There may be various reasons why the REER does not adjust fully to its calculated equilibrium value. One argument concerns the exchange rate regime in place. If the nominal exchange rate is not floating, it will take longer for the REER to adjust, or it will adjust only partially, if at all. To test this possibility, the following regressions control for differences in the exchange rate regime across countries and time. The exchange rate regime is summarized in a dummy variable based on the IMF classification in the IMF *Annual Report on Exchange Arrangements and Exchange Restrictions* (AREAER). Note that the IMF classification is based on available information on countries' de facto arrangements, as analyzed by IMF staff, which may differ from countries' officially announced (de jure) arrangements. In particular, the classification for 'free floating' regime is very restrictive and uses information on reserve accumulation of countries.<sup>11</sup>

The dummy variable equals one if the exchange rate regime is classified as 'free floating' or 'floating' throughout the horizon following the exchange rate assessment. It equals zero otherwise.<sup>12</sup>

Furthermore, the interaction term between the exchange rate regime dummy and the misalignment measure is included in the regressions. Additionally, a time trend is included. The specification is the following:

$$\log REER_{j,t+k} - \log REER_{j,t} = \alpha_j + \beta \times Misalignment_{j,t} + \gamma \times Dummy_{j,t \rightarrow t+k} + \delta \times Dummy_{j,t \rightarrow t+k} \times Misalignment_{j,t} + Time\ trend_t$$

where  $j$  denotes the currency in question,  $k$  denotes the time horizon studied, and  $Dummy$  denotes the exchange rate regime variable.  $Misalignment$  is either the  $MB$ ,  $ERER$ ,  $ES$  or  $IMF$   $Misalignment$ .

If the REER does not adjust fully due to a non-free-floating exchange rate regime, then the interaction term between the dummy and the misalignment variable should be statistically

---

<sup>11</sup> If information on reserve accumulation is not made available by a country, then the exchange rate regime is classified as 'floating' by the IMF.

<sup>12</sup> For robustness check, a stricter definition of the exchange rate regime was used where the dummy equals 1 for only 'free floating' regimes. In that case, controlling for the exchange rate regime in the specification did not improve the predictability of exchange rates. The result was valid for all misalignment variables and horizons.

significant and negative. Furthermore, the fit of the model should be higher when the exchange rate regime is taken into account.

Table 5 presents the results of the panel regressions with country fixed effects using the above specification over the two-year horizon. For robustness checks four different model specifications are considered. Model 1 corresponds to the results shown in Table 3. Table 5 shows that none of the interaction terms is statistically significant for any misalignment measure. Also the fit of the model does not significantly improve if the exchange rate regime is controlled for. Thus over the two-year horizon, the exchange rate regime does not appear to influence the predictive performance of the exchange rate assessments. Furthermore, the coefficient of the time trend is statistically insignificant for all misalignment measures.

Next, consideration is given to the other horizons, when the exchange rate regime is controlled for. Tables 6 and 7 illustrate the results for shorter and longer horizons, respectively. It is worth noting that the influence of the exchange rate regime on the adjustment depends greatly on the length of the horizon considered. In general, for the shortest horizon, the exchange rate regime plays a relatively important role in the predictive power of the assessments. On the other hand, for the longest horizon the exchange rate regime is insignificant in the external adjustment process. Furthermore, the time trend remains irrelevant in all horizons considered.

In particular, Table 6 shows that for the 6-month horizon, the interaction term is statistically significant in all the specifications and misalignment measures considered. Furthermore, the adjusted R-square increases in the 6-month horizon, when the exchange rate regime is controlled for. On the other hand, for the 1-year horizon, the interaction term is not always statistically significant. Thus the exchange rate regime plays a role in external adjustment only in the very short run.

Table 7, on the other hand, shows that the interaction term is statistically insignificant in the 5-year horizon in all the specifications and misalignment measures considered. Controlling for the exchange rate regime even lowers the fit of the model to the data. For the 3 and 4-year horizons, however, the results are mixed depending on the misalignment measure used. For example, in the 3-year horizon, controlling for the exchange rate regime increases the fit of the model for all misalignment measures except the *MB Misalignment*. For the 4-year horizon, the interaction term becomes statistically insignificant for the *ERER Misalignment*, and is

weakly significant for the *MB Misalignment*. These mixed results may be due to the specific nature of the sample period.

Overall, it seems redundant to control for the exchange rate regime in these specifications for longer horizons because controlling for it does not improve the fit of the model to the data in a significant and consistent way. This might be due to the fact that exchange rate regimes do not often change and their continuity can already be captured in country fixed effects. Thus, from this point on, model specifications do not control for the exchange rate regime and do not include a time trend.

Furthermore, Tables 6 and 7 confirm the previous findings that the *ERER Misalignment* outperforms the *MB* and the *ES Misalignments* in terms of predicting future exchange rate movements over all horizons and specifications considered. Thus the predictive power of the *IMF Misalignment* continues to come from that of the *ERER Misalignment*, even when the exchange rate regime is controlled for.

### **3.4. Predictive power in advanced economies versus emerging market economies**

This subsection investigates the possibility that the predictive power of the misalignment variables might differ in advanced economies (AEs) and in emerging market economies (EMEs). Such a difference might be due to different volatilities of macroeconomic variables and/or the availability of more detailed data for more accurate medium-term forecasts. To test this hypothesis, the sample of countries is split into two subsamples of AEs and EMEs. Tables 8 and 9 illustrate the regression results in these subsamples.<sup>13</sup> A comparison of the regression results indicate that the predictive power of the assessments for subsequent exchange rate movements is indeed higher in AEs than in EMEs.

Confirming previous results, the *ERER Misalignment* outperforms the other two model-based misalignment variables in both subsamples, both in terms of the fit of the model and in terms of the absolute value of the coefficient. In the AEs subsample, for example, about 89 percent of the exchange rate gap, as measured by the *ERER Misalignment*, is closed within 3 years of the assessment, whereas in the EMEs subsample about 53 percent of the exchange rate gap as measured by the *ERER Misalignment* is closed after 3 years. The predictive power of the *MB*

---

<sup>13</sup> The countries and their classification are listed in Appendix B.

*Misalignment* and *ES Misalignment* is significantly better in AEs than in EMEs. In the AE subsample, the predictive power of the *IMF Misalignment* is higher than the *ERER Misalignment* in terms of the absolute value of the coefficient, but not in terms of the fit of the model.

Furthermore, the absolute value of the coefficient of the misalignment variables for the AEs subsample increases considerably in absolute value with the length of the horizon up to 4 years. For the 5-year horizon, though, the estimated coefficient is lower in absolute value. This may be due to new macroeconomic events that are not captured in the assessments 5 years in advance. There is a similar pattern for the *IMF Misalignment* coefficient for the EMEs subsample. However, for the other misalignment measures, these patterns do not strictly hold in the EMEs subsample.

### **3.5. Predictive power in open versus closed economies**

Two of the exchange rate models, namely the MB and ES models, assume that the exchange rate adjustment mechanism occurs through the international trade channel. In other words, the current account gap is assumed to be closing after an exchange rate depreciation (appreciation) through an increase (decrease) in net exports. Thus, a possible reason why these two models' misalignment measures may not be as powerful as the ERER model's misalignment measure in predicting subsequent exchange rate movements is that some economies are not very open to international trade and it may take them much longer to complete the external adjustment.<sup>14</sup> To control for the differences in openness across countries, the sample is divided into two groups. Open economies are defined as countries where the average of exports plus imports is greater than 70 percent of GDP during the sample period. The remaining countries are categorized as closed economies.<sup>15</sup>

Tables 10 and 11 summarize the regression results in the open and closed economy subsamples, respectively. For all horizons considered, the fit of the *MB* and *ES Misalignments*

---

<sup>14</sup> In fact, the MB and ES models account for the varying levels of openness of countries, because they use country-specific exchange rate elasticities of current accounts to calculate the necessary appreciation or depreciation of currencies to close the current account gap. Thus, the varying level of openness has an impact on the size of the exchange rate adjustment in these two models but not on its speed. By dividing the sample into open and closed economies, one can test whether open economies undergo the external adjustment much faster than closed economies.

<sup>15</sup> The countries and their classifications are listed in Appendix B.



is found to be larger in open economies than in closed economies. However, the estimated coefficients for open economies are not always statistically significant. This is driven by large standard errors of the estimated coefficients. On the other hand, the estimated coefficients in absolute value are larger in the open economies subsample compared to the closed economies subsample. This suggests that the speed of adjustment is different in open versus closed economies. In other words, the misalignment gap calculated in the MB and ES models reduces generally faster and to a greater extent in open economies.

On the other hand, the predictive power of the *ERER Misalignment* is generally higher in the closed economies subsample than in the open economies subsample. This may be reconciled by the fact that the exchange rate adjustment in the ERER model does not operate through the international trade channel.

### **3.6. Predictive performance of different assessment vintages**

An interesting question concerns exchange rate adjustment during/after the financial crisis. Were all assessment periods equally successful in predicting future exchange rate movements? Because the sample period includes the global financial crisis, during which significant exchange rate movements took place, assessments before the onset of the financial crisis deserve special scrutiny. Could, for example, the exchange rate assessments made in fall 2006, spring 2007, and fall 2007 successfully predict the subsequent exchange rate movements? How much of the exchange rate corrections that took place during the crisis were predicted in those assessments?

Table 12 gives the directional accuracy of all assessment periods separately. In other words, for each assessment period, it lists the share of currencies for which the misalignment gap was reduced over various horizons. At first glance, the assessments made in fall 2006, spring 2007, and fall 2007 were not necessarily less successful than the assessments undertaken after the onset of the crisis in predicting the direction of the subsequent REER movements. For example, 76 percent of currencies that were diagnosed as undervalued (or overvalued) in fall 2006 according to the *IMF Misalignment*, had appreciated (or depreciated) by fall 2011.

Sequential bivariate regressions without fixed effects as in section 3.1 were also undertaken for each assessment period to evaluate the predictive power of each vintage separately. However, due to the low number of observations in each assessment period, standard errors

tend to be high and a large number of estimated coefficients prove to be statistically not different from zero. Interestingly, however, the assessment made in fall 2007 has statistically significant coefficients for all misalignment measures for the 4-year horizon. This finding suggests that assessments made before the onset of the financial crisis were not necessarily less successful in correctly predicting the exchange rate than assessments made after the crisis. Due to space constraints and the high number of statistically insignificant findings, the results are not shown here.

### **3.7. Robustness check with safe haven currencies**

Another interesting question concerns safe haven currencies: Are the IMF models adequate to assess safe haven currencies because there may be other factors, such as global risk perception, that move these currencies, especially during turbulent times? In other words, the predictive power of the assessments may be affected by the presence of safe haven currencies in the sample. Five currencies, namely, the US dollar, euro, British pound, Swiss franc, and Japanese yen can be considered as safe haven currencies in the current sample according to the previous literature; see, for example, Ranaldo and Söderlind (2010), Habib and Stracca (2012), Grisse and Nitschka (2015), and de Bock and de Carvalho Filho (2015), among others.

In order to check the robustness of the previous findings, panel analysis with country fixed effects are undertaken in three additional subsamples which include/exclude safe haven currencies. The first sample includes all currencies in the original sample; these results correspond to the results shown in Table 4 in section 3.2. The second sample includes all currencies except the US dollar. The third sample includes all currencies except the five safe haven currencies mentioned above. And finally, the fourth sample consists only of these five safe haven currencies.

Figure 2 graphically illustrates the estimated coefficients of the misalignment variables over various horizons. All estimated coefficients in all samples are negative. The majority of them are also statistically significant.<sup>16</sup> A few striking observations can be made regarding Figure 2. First, the misalignment gaps of safe haven currencies close faster, in relative terms, than do

---

<sup>16</sup> A table with the estimated coefficients and standard errors is not shown due to space constraints. All coefficients are significant for the ERES Misalignment. Some of the coefficients are insignificant for the safe haven subsample for the other Misalignment variables due to a large standard error.

those of the remaining currencies. This observation is valid for all misalignment variables and over all horizons considered, except the 6-month horizon. Thus, over the very short horizon, the IMF models do not have much predictive power for safe haven currencies, whereas they have significantly higher predictive power over longer horizons. For example, three years after the assessment, the IMF misalignment gap is completely closed in the safe haven subsample (the coefficient estimate is 1). Second, excluding safe haven currencies from the sample yields lower estimated coefficients in absolute value in general but does not significantly change the results laid out in the previous subsections.

Figure 2 also confirms the previous finding that over the 5-year horizon the estimated coefficients are lower in absolute value than the coefficients over the 4-year horizon. This result may be driven by significant changes in the outlook for underlying exchange rate fundamentals, such that the assessments no longer reflect the current situation. Alternatively, at the 5-year horizon the benefits of allowing the exchange rate longer time to adjust are lower than the cost of changing macroeconomic determinants.

### **3.8. Predictive power of market expectations**

Can market analysts' forecasts predict future exchange rate movements better than the IMF's state-of-the-art models? The documents where the IMF assessments were taken from, namely the IMF *Office Memorandums* on the Exchange Rate Assessments for Selected Advanced and Emerging Market Economies, also report on market expectations of changes in REER. These market expectations are calculated by the IMF based on information obtained from *Consensus Forecasts*. They are weighted averages of bilateral real exchange rate forecasts vis-à-vis the US dollar where nominal exchange rate expectations and inflation projections are taken from Consensus Forecasts (or the WEO database when unavailable).

Figure 3 illustrates scatter plots of market expectations and subsequent REER movements in the 2- and 5-year horizons. Overall, in the 2-year horizon, market expectations seem to be a good predictor of exchange rate movements. A comparison with Figure 1 confirms that there are less outliers in the first and third quadrants in Figure 3. Furthermore, the linear fit has a statistically significant coefficient. In fact, on average 30 percent of the market expected exchange rate movement takes place after two years when country specific factors are not taken into account. The predictive power of market expectations declines with the length of the

horizon. The bottom panel of Figure 3 shows that there are more outliers in the upper right and bottom left quadrants so that the coefficient of the linear fit becomes statistically insignificant for the 5-year horizon.

Table 13 lists the coefficients of the linear fit as well as the directional accuracy of market expectations. A comparison with Tables 2 leads to the conjecture that the directional accuracy of the IMF assessments is higher than market expectations both in the 2 and 5-year horizons.

#### **4. Conclusion**

This paper has tested whether the IMF's exchange rate assessments have predictive content for future exchange rate movements. The analysis has revealed that the IMF 'diagnosis' of undervalued or overvalued currencies based on state-of-the-art models is predictive of future exchange rate movements.

Interestingly, one of the models, namely the ERE model, outperforms not only the other two in predicting future exchange rate movements, but also the (average) IMF assessment. Furthermore, the IMF assessments are better at predicting future exchange rate movements in advanced economies than in emerging market economies. Controlling for the exchange rate regime does not yield different results. Furthermore, the IMF assessments have higher predictive performance in open economies than in closed economies. Last but not least, safe haven currencies close the misalignment gap predicted by the models faster than other currencies.

The analysis has certain limitations. First of all, the sample period is rather short. The IMF conducted the CGER analysis between 2006 and 2011. This limits the number of observations that can be tested for the exchange rate adjustment over the longer horizon. Second, the period includes the global financial crisis and the euro area sovereign debt crisis. Such turbulent times were not foreseen by the IMF or any other institution *ex ante*, and certainly were not taken into account in the exchange rate assessments previously. Nevertheless, assessments made until the onset of the financial crisis do not exhibit less accuracy in predicting the direction of the future exchange rate movements. Last but not least, the analysis does not control for subsequent revisions to the IMF outlook for macroeconomic variables. This is done intentionally, as the aim of the paper is to test how well the exchange rate assessments made by the state-of-the-art models can predict future exchange rate movements *ex-ante*. In fact, the whole exercise is a

joint test of the IMF exchange rate models and macroeconomic outlooks for exchange rate predictability.

The findings suggest that the EREER model predicts future exchange rate movements on average better than the other two models. Nevertheless, there are still significant gains from using the other two exchange rate models to assess exchange rates. First of all, no single model is good for all currencies. In fact, the EREER model can also make persistent errors for certain currencies, whereas the MB and the ES models perform better in that respect. Furthermore, the EREER model is only a reduced form model, whereas the MB and ES models are based on some theoretical considerations. In the context of the global imbalances debate, the MB and ES models are therefore more attractive from an international institution's perspective to utilize, even if they are not as successful to predict future exchange rate movements. Recently, however, the IMF changed its external sector assessment framework. To assess exchange rates only a modified version of the EREER model is being used since 2012. The modified versions of the MB and ES models, while still being utilized, do not have a direct link to the exchange rate anymore. That is, the IMF ceased making a direct link from equilibrium current accounts to equilibrium exchange rates for now.

## 5. References

- Abiad, Abdul, Prakash Kannan, and Jungjin Lee (2009), “Evaluating Historical CGER Assessments: How Well Have They Predicted Subsequent Exchange Rate Movements?”, *IMF Working Paper*, No. 09/32.
- Beusch, Elisabeth, Barbara Döbeli, Andreas M. Fischer, and Pinar Yeşin (2014), “Merchanting and Current Account Balances”, CEPR Discussion Paper, No 9990.
- Bussière, Matthieu, Michele Ca’ Zorzi, Alexander Chudik, and Alistair Dieppe, “Methodological Advances in the Assessment of Equilibrium Exchange Rates”, ECB Working Paper Series, No 1151.
- Chinn, Menzie D. and Eswar Prasad (2003), “Medium-term Determinants of Current Accounts in Industrial and Developing Countries: an Empirical Exploration”, *Journal of International Economics*, No. 59, pages 47–76.
- de Bock, Reinout and Irineu de Carvalho Filho (2015), “The Behavior of Currencies during Risk-off Episodes”, *Journal of International Money and Finance*, No. 53, pages 218–234.
- Evans, Martin D. D. and Richard K. Lyons (2006), “Understanding order flow”, *International Journal of Finance and Economics*, Vol. 11, No. 1, pages 3–23.
- Fischer, Andreas M., Jessica Leutert, and Pinar Yeşin (2012), “Persistent Surpluses: Modeling the Swiss Current Account Using the Absorption Approach”, unpublished manuscript, Swiss National Bank, March 2012.
- Grisse, Christian and Thomas Nitschka (2015), “On Financial Risk and the Safe Haven Characteristics of Swiss Franc Exchange Rates”, *Journal of Empirical Finance*, Vol. 32, pages 153–164.
- Habib, Maurizio M. and Livio Stracca (2012), “Getting beyond carry trade: What makes a safe haven currency?”, *Journal of International Economics*, Vol. 87, pages 50–64.
- Isard, Peter and Hamid Faruqee (1998), “Exchange Rate Assessment: Extensions of the Macroeconomic Balance Approach”, *IMF Occasional Paper*, No. 167.
- Isard, Peter, Hamid Faruqee, G. Russell Kincaid, and Martin Fetherston (2001), “Methodology for Current Account and Exchange Rate Assessments”, *IMF Occasional Paper*, No. 209.

Lee, Jaewoo, Gian Maria Milesi-Ferretti, Jonathan Ostry, Alessandro Prati, and Luca Antonio Ricci (2008), “Exchange Rate Assessments: CGER Methodologies”, *IMF Occasional Paper*, No. 261.

Meese, Richard A. and Kenneth Rogoff (1983a), “Empirical Exchange Rate Models of the Seventies: Do they fit out of sample?”, *Journal of International Economics*, Vol. 14, pages 3–24.

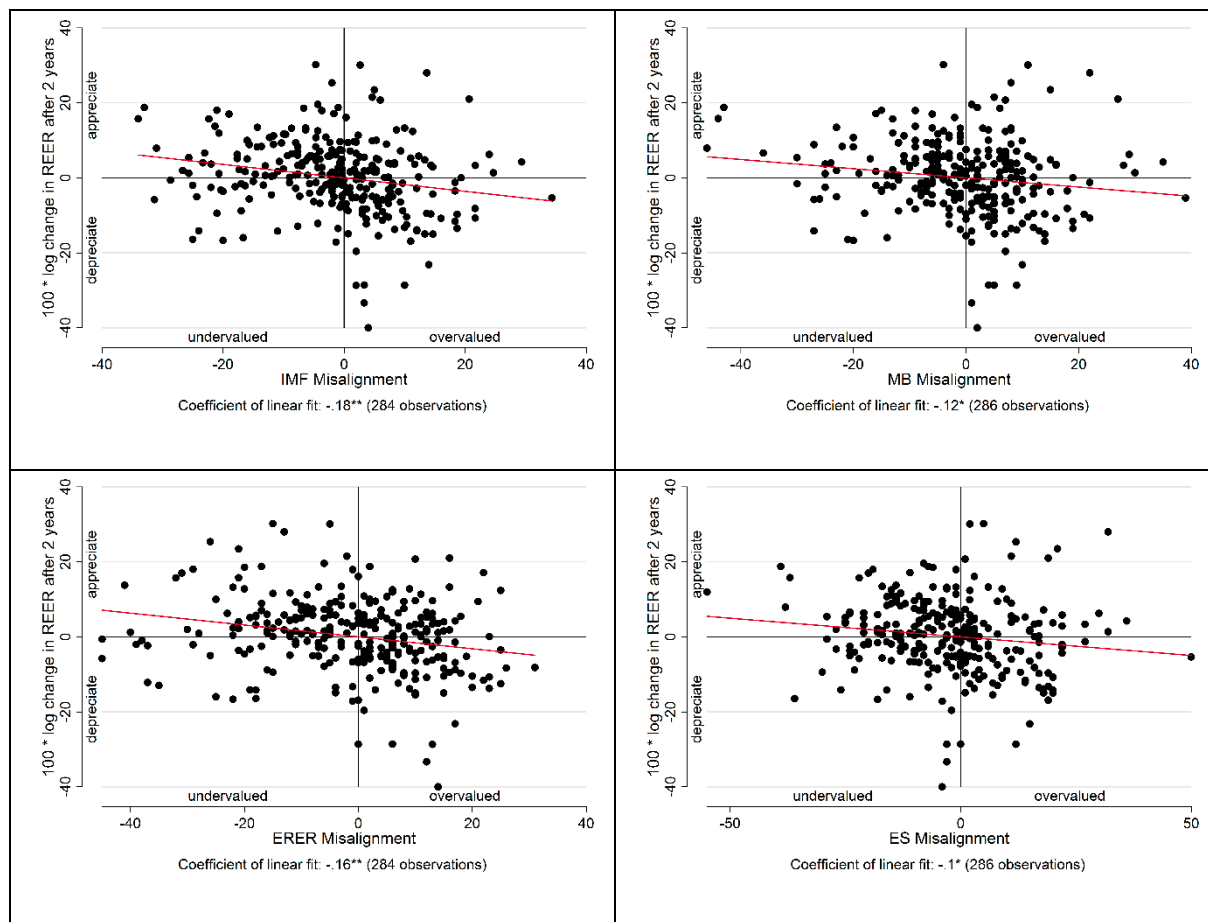
Meese, Richard A. and Kenneth Rogoff (1983b), “The out-of sample failure of empirical exchange rates: sampling error or misspecification?”, in J. Frenkel (ed.) *Exchange Rates and International Macroeconomics*, pp. 67–105, Chicago: NBER and University of Chicago Press.

Phillips, Steven, Luis Catão, Luca Ricci, Rudolfs Bems, Mitali Das, Julian Di Giovanni, D. Filiz Unsal, Marola Castillo, Jungjin Lee, Jair Rodriguez, and Mauricio Vargas (2013), “The External Balance Assessment (EBA) Methodology”, IMF Working Paper, No. 13/272.

Ranaldo, Angelo and Paul Söderlind (2010), “Safe Haven Currencies”, *Review of Finance*, Vol. 14, pages 385–407.

## 6. Figures and Tables

**Figure 1: Misalignments and Two-year Ahead REER Changes**



*Source:* IMF, BIS, and own calculations.

*Note:* The figures show scatter plots of the different misalignment measures and the two-year-ahead changes in the natural logarithm of the REER following the assessments. A linear fit without a constant and with robust standard errors clustered at country level is also depicted in each figure.

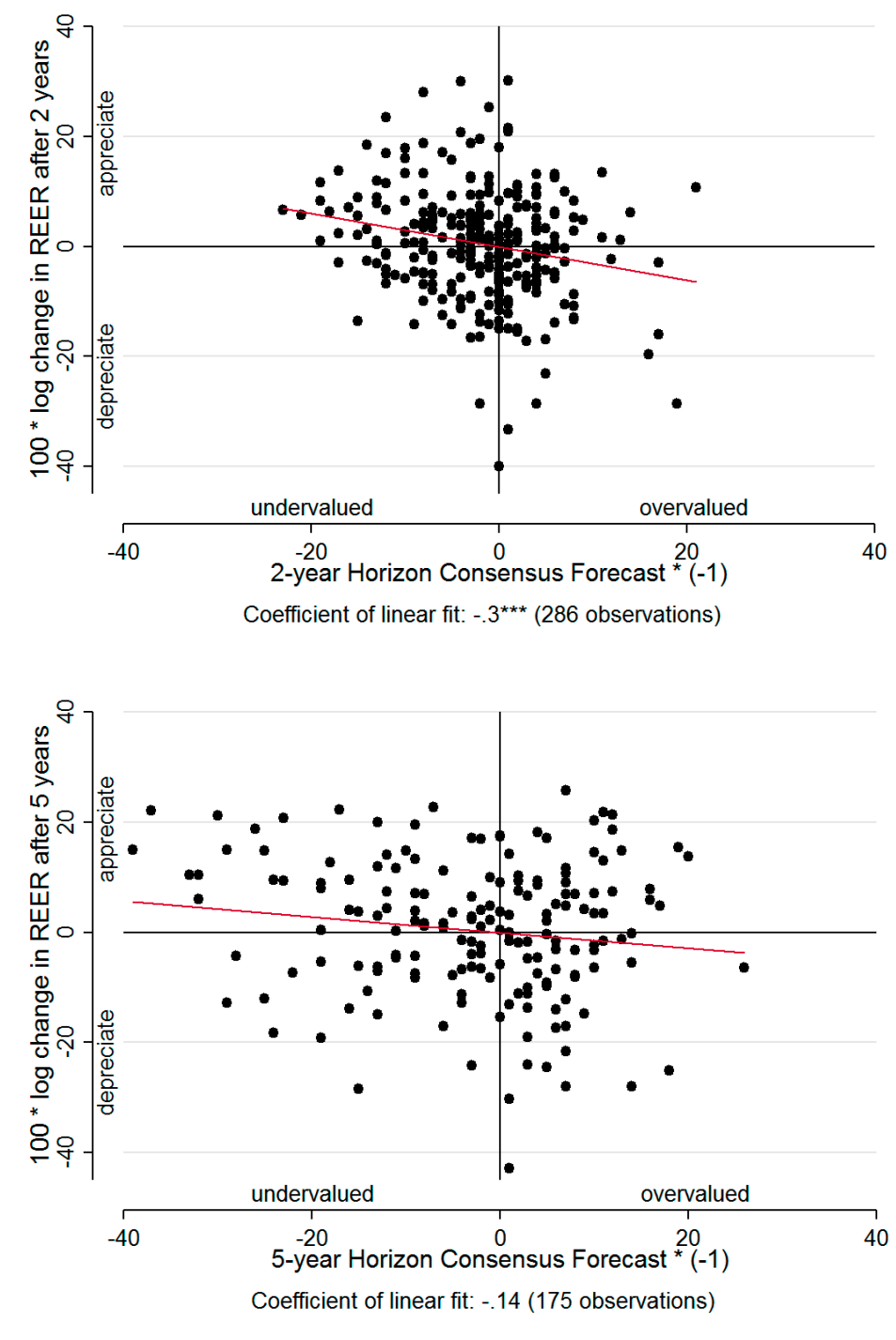


**Figure 2: Robustness Check – Safe Haven Currencies**



*Note:* The figures illustrate the estimated coefficients of the *IMF/MB/ERER/ES Misalignment* variables in predicting future exchange rate movements over various horizons in different currency samples. Safe haven currencies in these regressions are the US dollar, euro, British pound, Swiss franc, and Japanese yen.

**Figure 3: Predictive power of market expectations**



Source: IMF, BIS, and own calculations.

Note: The figures show scatter plots of market expectations for future exchange rate movements in the 2-year and 5-year horizon and subsequent changes in the natural logarithm of the exchange rate. A linear fit without a constant and with robust standard errors clustered at country level is also depicted in each figure.

**Table 1: Statistical Properties of Misalignments and Subsequent REER Changes**

Misalignment	IMF	MB	ERER	ES
Average	-1.20	-0.57	-1.11	-1.94
Standard Deviation	11.39	12.07	14.16	14.06

Subsequent changes in log(REER) * 100						
	6 months	1 year	2 years	3 years	4 years	5 years
Average	0.07	0.03	0.05	1.03	1.66	1.67
Standard Deviation	5.68	7.97	10.08	11.10	12.58	12.21

**Table 2: Misalignments and Subsequent REER Changes**

		6 months	1 year	2 years	3 years	4 years	5 years
IMF	linear fit	-0.09***	-0.13**	-0.18**	-0.23*	-0.29*	-0.25
Misalignment	directional accuracy	57.4	60.2	60.9	66.9	68.7	70.7
MB	linear fit	-0.07***	-0.10**	-0.12*	-0.20**	-0.24*	-0.23
Misalignment	directional accuracy	54.2	55.2	58.7	59.8	59.8	59.3
ERER	linear fit	-0.07**	-0.10*	-0.16**	-0.16	-0.18	-0.13
Misalignment	directional accuracy	53.5	55.6	58.8	61.3	60.9	62.4
ES	linear fit	-0.06***	-0.08**	-0.10*	-0.14*	-0.22**	-0.20*
Misalignment	directional accuracy	48.6	50.3	53.5	55.2	58.1	61.5

*Source:* IMF, BIS, and own calculations.

*Note:* The table shows the coefficients of linear fit without a constant between 100 \* the corresponding log change in REER and the misalignment measures for different horizons. Clustered robust standard errors, clustering on the country level, over time. Statistical significance: \*\*\* denotes significance at 1 percent, \*\* denotes significance at 5 percent, and \* denotes significance at 10 percent.

The table also shows the directional accuracy of the exchange rate assessments: The share of observations in which the REER appreciated (depreciated) after the currency had been assessed as undervalued (overvalued) are reported.

**Table 3: Panel Regression with Country Fixed Effects (2-Years Horizon)**

	IMF	MB	ERER	ES
Coefficient of the misalignment assessment	-0.58*** [0.141]	-0.27** [0.127]	-0.59*** [0.092]	-0.20** [0.096]
Observations	284	286	284	286
R-squared	0.152	0.036	0.304	0.027

Note: The table shows the coefficients of linear fit without a constant between 100 \* the log change in REER until two years after the assessment and the misalignment measures. Clustering robust standard errors in brackets (clustering on the country level, over time). Statistical significance: \*\*\* denotes significance at 1 percent, \*\* denotes significance at 5 percent, and \* denotes significance at 10 percent.

**Table 4: Panel Regression with Country Fixed Effects (All Horizons)**

	6 months	1 year	2 years	3 years	4 years	5 years
IMF Misalignment	-0.36*** [0.058]	-0.48*** [0.097]	-0.58*** [0.141]	-0.83*** [0.150]	-0.93*** [0.167]	-0.73*** [0.182]
Observations	284	284	284	284	233	181
R-squared	0.134	0.134	0.152	0.276	0.323	0.286
MB Misalignment	-0.24*** [0.054]	-0.30*** [0.083]	-0.27** [0.127]	-0.56*** [0.149]	-0.57*** [0.170]	-0.47*** [0.153]
Observations	286	286	286	286	234	182
R-squared	0.066	0.057	0.036	0.136	0.135	0.138
ERER Misalignment	-0.28*** [0.033]	-0.40*** [0.066]	-0.59*** [0.092]	-0.69*** [0.103]	-0.77*** [0.124]	-0.60*** [0.144]
Observations	284	284	284	284	233	181
R-squared	0.156	0.177	0.304	0.365	0.402	0.340
ES Misalignment	-0.18*** [0.051]	-0.23*** [0.080]	-0.20** [0.096]	-0.39*** [0.135]	-0.48*** [0.136]	-0.38*** [0.130]
Observations	286	286	286	286	234	182
R-squared	0.052	0.046	0.027	0.087	0.133	0.115

*Note:* The table shows the coefficients of panel regressions with country fixed effects, where 100 \* the corresponding log change in REER is the dependent variable and the independent variables are the misalignment measures for different horizons. Clustering robust standard errors in brackets (clustering on the country level, over time). Statistical significance: \*\*\* denotes significance at 1 percent, \*\* denotes significance at 5 percent, and \* denotes significance at 10 percent.

**Table 5: Panel Regression Controlling for the Exchange Rate Regime with Country Fixed Effects (2-Years Horizon)**

IMF Misalignment					MB Misalignment				
	(1)	(2)	(3)	(4)	(1)	(2)	(3)	(4)	
Misalignment	-0.58*** [0.141]	-0.58*** [0.147]	-0.55*** [0.129]	-0.62*** [0.144]	-0.27** [0.127]	-0.27*** [0.090]	-0.26*** [0.087]	-0.27** [0.101]	
Misalignment * dummy		-0.00 [0.181]	-0.04 [0.178]	0.01 [0.151]		-0.00 [0.137]	-0.02 [0.141]	-0.02 [0.138]	
Dummy			-1.92 [2.921]	-1.09 [2.733]			-1.64 [2.542]	-1.43 [2.523]	
Time trend			0.26 [0.276]					0.10 [0.299]	
Observations	284	284	284	284	286	286	286	286	
R-squared	0.152	0.152	0.154	0.161	0.036	0.036	0.037	0.038	

ERER Misalignment					ES Misalignment				
	(1)	(2)	(3)	(4)	(1)	(2)	(3)	(4)	
Misalignment	-0.59*** [0.092]	-0.58*** [0.091]	-0.58*** [0.089]	-0.62*** [0.084]	-0.20** [0.096]	-0.13 [0.088]	-0.11 [0.082]	-0.12 [0.099]	
Misalignment * dummy		-0.01 [0.110]	-0.02 [0.117]	0.02 [0.097]		-0.11 [0.133]	-0.15 [0.140]	-0.14 [0.135]	
Dummy			-0.54 [3.141]	0.11 [2.915]			-1.98 [2.733]	-1.69 [2.659]	
Time trend			0.22 [0.236]					0.10 [0.315]	
Observations	284	284	284	284	286	286	286	286	
R-squared	0.304	0.304	0.305	0.310	0.027	0.029	0.031	0.032	

*Note:* The dependent variable is log change in the REER (\*100) two years after the assessment. The table lists the estimated coefficients for the different misalignment measures in a panel regression with country fixed effects. Clustering robust errors are given in square brackets (clustering on the country level, over time). Statistical significance: \*\*\* denotes significance at 1 percent, \*\* denotes significance at 5 percent, and \* denotes significance at 10 percent.

**Table 6: Exchange Rate Regime and External Adjustment over Shorter Horizons**

	6 months				1 year			
	Model 1	Model 2	Model 3	Model 4	Model 1	Model 2	Model 3	Model 4
IMF Misalignment	-0.36*** [0.058]	-0.20** [0.080]	-0.14** [0.064]	-0.16** [0.067]	-0.48*** [0.097]	-0.44*** [0.104]	-0.30*** [0.084]	-0.32*** [0.094]
IMF Misalignment * Dummy		-0.20** [0.094]	-0.27*** [0.083]	-0.26*** [0.083]		-0.04 [0.104]	-0.22** [0.103]	-0.21** [0.100]
Dummy			-3.24*** [1.091]	-3.41*** [1.114]			-5.70*** [1.329]	-5.40*** [1.401]
Time trend				0.11 [0.108]				0.11 [0.161]
Observations	284	284	284	284	284	284	284	284
R-squared	0.134	0.146	0.161	0.164	0.134	0.135	0.150	0.152
MB Misalignment	-0.24*** [0.054]	-0.09** [0.040]	-0.06 [0.041]	-0.07 [0.047]	-0.30*** [0.083]	-0.29*** [0.078]	-0.23*** [0.051]	-0.23*** [0.057]
MB Misalignment * Dummy		-0.18*** [0.064]	-0.23*** [0.067]	-0.23*** [0.068]		-0.00 [0.088]	-0.10 [0.067]	-0.10 [0.067]
Dummy			-2.99** [1.378]	-3.15** [1.422]			-4.93*** [1.400]	-4.85*** [1.406]
Time trend				0.08 [0.081]				0.06 [0.148]
Observations	286	286	286	286	286	286	286	286
R-squared	0.066	0.076	0.089	0.091	0.057	0.057	0.071	0.072
ERER Misalignment	-0.28*** [0.033]	-0.16*** [0.046]	-0.14*** [0.040]	-0.15*** [0.042]	-0.40*** [0.066]	-0.34*** [0.039]	-0.26*** [0.039]	-0.27*** [0.046]
ERER Misalignment * Dummy		-0.15** [0.055]	-0.17*** [0.053]	-0.17*** [0.055]		-0.07 [0.050]	-0.15*** [0.055]	-0.15** [0.055]
Dummy			-2.35** [0.968]	-2.44** [0.930]			-3.67*** [0.787]	-3.52*** [0.909]
Time trend				0.05 [0.114]				0.05 [0.168]
Observations	284	284	284	284	284	284	284	284
R-squared	0.156	0.169	0.178	0.178	0.177	0.179	0.185	0.186
ES Misalignment	-0.18*** [0.051]	-0.07* [0.038]	-0.03 [0.026]	-0.04 [0.030]	-0.23*** [0.080]	-0.14 [0.102]	-0.05 [0.072]	-0.05 [0.078]
ES Misalignment * Dummy		-0.18*** [0.061]	-0.25*** [0.063]	-0.24*** [0.062]		-0.12 [0.108]	-0.29*** [0.100]	-0.28*** [0.096]
Dummy			-3.59*** [1.079]	-3.74*** [1.119]			-6.98*** [1.489]	-6.86*** [1.403]
Time trend				0.09 [0.088]				0.06 [0.156]
Observations	286	286	286	286	286	286	286	286
R-squared	0.052	0.068	0.086	0.088	0.046	0.051	0.075	0.075

*Note:* The dependent variable is percentage change in the REER 6 months and 1 year after the assessment, respectively. The table lists the estimated coefficients for the different misalignment measures in a panel regression with fixed country effects. Robust standard errors clustered at currency level are given in square brackets. Statistical significance: \*\*\* denotes significance at 1 percent, \*\* denotes significance at 5 percent, and \* denotes significance at 10 percent.



**Table 7: Exchange Rate Regime and External Adjustment over Longer Horizons**

	3 years				4 years				5 years			
	Model 1	Model 2	Model 3	Model 4	Model 1	Model 2	Model 3	Model 4	Model 1	Model 2	Model 3	Model 4
IMF Misalignment	-0.83*** [0.150]	-0.09 [0.080]	-0.10 [0.075]	-0.00 [0.125]	-0.93*** [0.167]	-0.22* [0.110]	-0.20** [0.093]	-0.17 [0.129]	-0.73*** [0.182]	-0.35** [0.140]	-0.36** [0.143]	-0.34 [0.224]
IMF Misalignment * Dummy		-0.72*** [0.165]	-0.72*** [0.165]	-0.82*** [0.165]		-0.65*** [0.202]	-0.67*** [0.192]	-0.70*** [0.198]		-0.11 [0.203]	-0.12 [0.204]	-0.13 [0.231]
Dummy			0.73 [3.263]	0.30 [3.336]			-1.90 [4.480]	-1.95 [4.277]			3.17 [5.893]	3.23 [5.935]
Time trend				-0.31 [0.361]				-0.13 [0.471]				-0.09 [0.800]
Observations	284	235	235	235	233	183	183	183	181	131	131	131
R-squared	0.276	0.281	0.281	0.289	0.323	0.317	0.319	0.319	0.286	0.148	0.155	0.156
MB Misalignment	-0.56*** [0.149]	-0.07 [0.066]	-0.08 [0.063]	-0.05 [0.087]	-0.57*** [0.170]	-0.17 [0.101]	-0.17* [0.094]	-0.17 [0.105]	-0.47*** [0.153]	-0.27** [0.121]	-0.26* [0.135]	-0.22 [0.157]
MB Misalignment * Dummy		-0.43** [0.161]	-0.42** [0.162]	-0.44** [0.164]		-0.38* [0.190]	-0.39* [0.188]	-0.38* [0.192]		0.04 [0.156]	0.02 [0.178]	0.01 [0.190]
Dummy			0.33 [2.354]	0.17 [2.380]			-3.70 [3.676]	-3.73 [3.858]		1.06 [6.014]	1.62 [6.014]	1.62 [5.779]
Time trend				-0.23 [0.402]				0.10 [0.526]				-0.41 [0.663]
Observations	286	236	236	236	234	184	184	184	182	132	132	132
R-squared	0.136	0.121	0.121	0.125	0.135	0.152	0.157	0.157	0.138	0.062	0.063	0.071
ERER Misalignment	-0.69*** [0.103]	-0.30*** [0.105]	-0.30*** [0.095]	-0.21** [0.094]	-0.77*** [0.124]	-0.33* [0.168]	-0.35* [0.192]	-0.27 [0.183]	-0.60*** [0.144]	-0.24* [0.135]	-0.32 [0.204]	-0.25 [0.219]
ERER Misalignment * Dummy		-0.40** [0.169]	-0.40** [0.152]	-0.51*** [0.124]		-0.36 [0.224]	-0.34 [0.246]	-0.47* [0.232]		-0.21 [0.299]	-0.17 [0.296]	-0.25 [0.279]
Dummy			4.47 [3.127]	4.17 [3.276]			2.34 [5.272]	2.28 [4.776]		7.28 [7.749]	7.31 [7.749]	7.31 [7.385]
Time trend				-0.46 [0.308]				-0.65 [0.436]				-0.52 [0.699]
Observations	284	235	235	235	233	183	183	183	181	131	131	131
R-squared	0.365	0.390	0.397	0.414	0.402	0.378	0.380	0.401	0.340	0.179	0.213	0.225
ES Misalignment	-0.39*** [0.135]	0.06 [0.062]	0.06 [0.055]	0.10 [0.085]	-0.48*** [0.136]	-0.00 [0.080]	0.01 [0.066]	0.01 [0.089]	-0.38*** [0.130]	-0.17* [0.099]	-0.16 [0.099]	-0.13 [0.129]
ES Misalignment * Dummy		-0.53*** [0.130]	-0.53*** [0.128]	-0.57*** [0.134]		-0.55*** [0.150]	-0.57*** [0.143]	-0.56*** [0.153]		-0.09 [0.149]	-0.10 [0.151]	-0.11 [0.166]
Dummy			-0.36 [3.300]	-0.70 [3.522]			-3.08 [3.837]	-3.07 [3.862]		2.39 [5.731]	2.68 [5.731]	2.68 [5.607]
Time trend				-0.28 [0.424]				0.02 [0.543]				-0.30 [0.701]
Observations	286	236	236	236	234	184	184	184	182	132	132	132
R-squared	0.087	0.117	0.117	0.124	0.133	0.152	0.155	0.155	0.115	0.073	0.077	0.080

*Note:* The dependent variable is percentage change in the REER 6 months and 1 year after the assessment, respectively. The table lists the estimated coefficients for the different misalignment measures in a panel regression with fixed country effects. Standard errors are given in square brackets. Statistical significance: \*\*\* denotes significance at 1 percent, \*\* denotes significance at 5 percent, and \* denotes significance at 10 percent.

**Table 8: Panel Regression in the Advanced Economies Subsample**

	6 months	1 year	2 years	3 years	4 years	5 years
IMF Misalignment	-0.33*** [0.100]	-0.61*** [0.176]	-0.86** [0.285]	-1.14*** [0.265]	-1.27*** [0.299]	-1.07** [0.355]
Observations	109	109	109	109	89	69
R-squared	0.163	0.266	0.308	0.466	0.525	0.418
MB Misalignment	-0.25** [0.089]	-0.41** [0.150]	-0.45 [0.285]	-0.75** [0.325]	-0.83** [0.351]	-0.67* [0.314]
Observations	110	110	110	110	90	70
R-squared	0.102	0.138	0.092	0.228	0.277	0.216
ERER Misalignment	-0.25*** [0.050]	-0.48*** [0.097]	-0.78*** [0.121]	-0.89*** [0.142]	-0.95*** [0.176]	-0.83*** [0.214]
Observations	109	109	109	109	89	69
R-squared	0.192	0.334	0.522	0.584	0.586	0.488
ES Misalignment	-0.22* [0.101]	-0.41** [0.162]	-0.46 [0.286]	-0.76** [0.303]	-0.88** [0.345]	-0.70* [0.359]
Observations	110	110	110	110	90	70
R-squared	0.068	0.117	0.086	0.200	0.251	0.180

*Note:* The dependent variable is log change in the REER (\*100) over various horizons subsequent to the assessment. The table lists the estimated coefficients for the different misalignment measures in a panel regression with fixed country effects. Clustering robust standard errors are given in square brackets (clustering on the country level, over time). Statistical significance: \*\*\* denotes significance at 1 percent, \*\* denotes significance at 5 percent, and \* denotes significance at 10 percent.

**Table 9: Panel Regression in the Emerging Market Economies Subsample**

	6 months	1 years	2 years	3 years	4 years	5 years
IMF Misalignment	-0.38*** [0.072]	-0.38*** [0.101]	-0.38*** [0.065]	-0.61*** [0.148]	-0.68*** [0.154]	-0.47*** [0.100]
Observations	175	175	175	175	144	112
R-squared	0.122	0.075	0.067	0.158	0.196	0.182

MB Misalignment	-0.23*** [0.070]	-0.21* [0.099]	-0.14 [0.082]	-0.41*** [0.124]	-0.34** [0.142]	-0.27*** [0.092]
Observations	176	176	176	176	144	112
R-squared	0.050	0.024	0.010	0.079	0.053	0.068

ERER Misalignment	-0.30*** [0.044]	-0.33*** [0.078]	-0.44*** [0.066]	-0.53*** [0.130]	-0.61*** [0.155]	-0.38*** [0.088]
Observations	175	175	175	175	144	112
R-squared	0.142	0.103	0.166	0.218	0.268	0.207

ES Misalignment	-0.17** [0.059]	-0.16* [0.083]	-0.10 [0.072]	-0.24* [0.136]	-0.33** [0.117]	-0.25** [0.086]
Observations	176	176	176	176	144	112
R-squared	0.046	0.025	0.009	0.046	0.089	0.094

*Note:* The dependent variable is log change in the REER (\*100) over various horizons subsequent to the assessment. The table lists the estimated coefficients for the different misalignment measures in a panel regression with fixed country effects. Clustering robust standard errors are given in square brackets (clustering on the country level, over time). Statistical significance: \*\*\* denotes significance at 1 percent, \*\* denotes significance at 5 percent, and \* denotes significance at 10 percent.

**Table 10: Panel Regression in Open Economies**

	6 months	1 years	2 years	3 years	4 years	5 years
IMF Misalignment	-0.46*** [0.098]	-0.59* [0.296]	-0.95* [0.420]	-0.82* [0.401]	-0.91 [0.473]	-1.18** [0.473]
Observations	77	77	77	77	63	49
R-squared	0.159	0.146	0.299	0.256	0.295	0.413

MB Misalignment	-0.39* [0.188]	-0.47 [0.276]	-0.65* [0.274]	-0.62* [0.300]	-0.69 [0.392]	-0.86* [0.380]
Observations	77	77	77	77	63	49
R-squared	0.101	0.084	0.126	0.132	0.144	0.199

ERER Misalignment	-0.24*** [0.044]	-0.32 [0.165]	-0.60* [0.249]	-0.48 [0.247]	-0.51 [0.304]	-0.62 [0.333]
Observations	77	77	77	77	63	49
R-squared	0.123	0.126	0.352	0.262	0.287	0.380

ES Misalignment	-0.38* [0.191]	-0.45 [0.290]	-0.55 [0.307]	-0.52 [0.314]	-0.66 [0.348]	-0.86** [0.339]
Observations	77	77	77	77	63	49
R-squared	0.094	0.076	0.087	0.093	0.132	0.180

*Note:* The dependent variable is log change in the REER (\*100) over various horizons subsequent to the assessment. The table lists the estimated coefficients for the different misalignment measures in a panel regression with fixed country effects. Clustering robust standard errors are given in square brackets (clustering on the country level, over time). Statistical significance: \*\*\* denotes significance at 1 percent, \*\* denotes significance at 5 percent, and \* denotes significance at 10 percent.

**Table 11: Panel Regression in Closed Economies**

	6 months	1 years	2 years	3 years	4 years	5 years
IMF Misalignment	-0.33*** [0.063]	-0.45*** [0.096]	-0.50*** [0.132]	-0.84*** [0.165]	-0.93*** [0.181]	-0.62*** [0.174]
Observations	207	207	207	207	170	132
R-squared	0.128	0.133	0.123	0.280	0.330	0.257

MB Misalignment	-0.21*** [0.054]	-0.26*** [0.085]	-0.21 [0.139]	-0.55*** [0.170]	-0.55*** [0.190]	-0.40** [0.165]
Observations	209	209	209	209	171	133
R-squared	0.060	0.052	0.024	0.137	0.135	0.132

ERER Misalignment	-0.29*** [0.044]	-0.43*** [0.078]	-0.59*** [0.089]	-0.77*** [0.118]	-0.88*** [0.140]	-0.58*** [0.134]
Observations	207	207	207	207	170	132
R-squared	0.169	0.198	0.289	0.405	0.455	0.318

ES Misalignment	-0.16*** [0.049]	-0.20** [0.080]	-0.16 [0.099]	-0.37** [0.147]	-0.46*** [0.146]	-0.33** [0.134]
Observations	209	209	209	209	171	133
R-squared	0.047	0.043	0.020	0.087	0.136	0.113

*Note:* The dependent variable is log change in the REER ( \* 100) over various horizons subsequent to the assessment. The table lists the estimated coefficients for the different misalignment measures in a panel regression with fixed country effects. Clustering robust standard errors are given in square brackets (clustering on the country level, over time). Statistical significance: \*\*\* denotes significance at 1 percent, \*\* denotes significance at 5 percent, and \* denotes significance at 10 percent.

**Table 12: Directional Accuracy of Assessments Undertaken in Different Periods (%)**

		6m	1y	2y	3y	4y	5y	
IMF Misalignment	2006H2		52	52	60	56	64	76
	2007H1		42	42	54	54	58	69
	2007H2		62	73	58	69	81	77
	2008H1		65	54	50	62	62	62
	2008H2		62	54	58	65	69	69
	2009H1		58	77	77	81	77	73
	2009H2		69	77	81	77	69	69
	2010H1		62	62	46	65	69	
	2010H2		54	54	58	77	69	
	2011H1		50	54	62	58		
MB Misalignment	2006H2		39	50	54	42	46	50
	2007H1		46	54	65	50	54	62
	2007H2		62	65	58	54	65	62
	2008H1		58	50	54	65	58	54
	2008H2		73	46	50	58	54	46
	2009H1		42	62	62	65	62	65
	2009H2		54	54	65	62	69	77
	2010H1		54	62	54	65	69	
	2010H2		62	54	65	69	62	
	2011H1		62	58	58	69		
ERER Misalignment	2006H2		48	40	44	40	44	56
	2007H1		39	39	50	50	54	65
	2007H2		58	62	62	65	69	65
	2008H1		69	73	46	50	50	58
	2008H2		62	50	62	69	65	58
	2009H1		54	65	65	69	73	69
	2009H2		62	69	69	73	58	65
	2010H1		46	46	58	62	69	
	2010H2		39	50	54	65	65	
	2011H1		54	50	65	54		
ES Misalignment	2006H2		42	42	62	50	50	62
	2007H1		39	46	58	50	54	65
	2007H2		62	65	58	62	73	69
	2008H1		58	46	50	58	62	50
	2008H2		54	42	54	62	65	65
	2009H1		46	62	62	65	62	65
	2009H2		69	69	73	62	54	54
	2010H1		50	58	39	50	54	
	2010H2		39	46	42	58	50	
	2011H1		42	35	42	42		

*Note:* The table shows the share of currencies that were diagnosed as undervalued (overvalued) in a given assessment period and subsequently appreciated (depreciated) over various horizons. Empty cells indicate yet unavailable data.

**Table 13: Market Expectations**

		6 months	1 year	2 years	3 years	4 years	5 years
Market	linear fit			-0.30***			-0.14
Expectations	directional accuracy			51.7			54.9

*Source:* IMF, BIS, and own calculations.

*Note:* The table shows the coefficients of linear fit without a constant between 100 \* the corresponding log change in REER and market expectations for future exchange rate movements for different horizons. Clustered robust standard errors, clustering on the country level, over time. Statistical significance: \*\*\* denotes significance at 1 percent, \*\* denotes significance at 5 percent, and \* denotes significance at 10 percent. The table also shows the share of observations where currencies appreciated (depreciated) following a market forecast of appreciation (depreciation).

## 7. Appendix

### 7.1. Appendix A: Exchange rate models

This appendix briefly explains the three CGER models used by the IMF to calculate equilibrium real effective exchange rates. For a more detailed explanation, see Lee et al. (2008). In all these models, the medium-term forecasts of the independent variables in the regressions are five-year-ahead outlook values taken from the IMF *World Economic Outlook* (WEO). Furthermore, in all these models, a final correction ensures that the calculated exchange rate misalignments are multilaterally consistent. See also Bussière et al (2010) on econometric issues surrounding the estimation of equilibrium exchange rates using these models.

#### 1. Macroeconomic Balance (MB) approach

The MB approach relies on estimating an equilibrium current account (CA) balance for each country in the sample. It embodies three steps: 1. Estimation of the long-run relationship between the CA and its determinants using a panel regression. 2. Calculation of the equilibrium CA using the estimated coefficients and the medium-term forecasts of the determinants for each country individually. 3. Calculation of the exchange rate movement that would be needed to close the gap between the medium-term forecast CA and the equilibrium CA.

The first step in the MB approach is based on an empirical study by Chinn and Prasad (2003). The main idea behind this approach is that the CA balance can be written as the difference between national savings and domestic investment. Therefore, variables that affect savings and investment in the long run are considered to be the determinants of the CA balance. These variables include, for example, the government budget balance, demographic changes, and relative income.<sup>17</sup> Factors influencing the CA in the short run, however, are disregarded in this approach.<sup>18</sup>

---

<sup>17</sup> Beusch et al. (2014) argue that merchanting has become another determinant of current account balances since it increases national savings but not domestic investment.

<sup>18</sup> In the IMF's MB approach, the exchange rate is not included among the explanatory variables for the CA. On the other hand, Chinn and Prasad (2003) include the exchange rate as one of the explanatory variables for the CA in their robustness checks.



The second step in the MB approach involves calculating the equilibrium CA level using the estimated coefficients from the first step and the medium-term forecasts of the determinants for each country separately.

The final step in the MB approach is a calculation of the real exchange rate adjustment that would close the gap between the CA outlook and the equilibrium CA. This calculated adjustment is the *MB Misalignment*. The assumption is that an exchange rate adjustment would move the CA outlook towards the equilibrium CA via the goods trade channel.<sup>19</sup> The approach uses values for the elasticity of trade with respect to the exchange rate which are based on previous literature.

## **2. Equilibrium Real Exchange Rate (ERER) approach**

The ERER approach is different from the MB and ES approaches because it directly estimates an equilibrium real effective exchange rate and abstracts from the current account. It embodies two steps. In the first step, a reduced form relationship between the real effective exchange rate and a set of fundamental variables is estimated using a panel dataset. In the second step, the equilibrium exchange rate is calculated using the estimated coefficients from the first step and the medium-term forecasts of the fundamental variables for each currency individually. The difference between the current level of the REER and the equilibrium exchange rate gives the *ERER Misalignment*.

## **3. External Sustainability (ES) approach**

The ES approach relies on estimating an equilibrium current account that would stabilize net foreign assets (NFA). This approach does not rely on an empirical estimation. Rather, it is a calculation of a variable using an identity equation. The main argument behind this approach is that debtor countries cannot accumulate liabilities forever, because creditor countries would force them to repay sometime in the future. Similarly creditor countries cannot accumulate claims on the rest of the world forever, because they would consume their savings sometime in the future.

---

<sup>19</sup> One of the disadvantages of the MB approach is the assumption that the goods trade balance responds to exchange rate movements. This might not be true for all countries if goods trade is not the main determinant of the CA balance. For example, Fischer et al (2012) find that the Swiss trade balance does not decline after an appreciation of the Swiss franc. On the contrary, the estimated coefficient is positive, albeit not statistically significant.

The approach embodies two steps. In the first step, the equilibrium CA is calculated by using an inter-temporal constraint which relates changes in NFA between time periods and the current CA balance. Under this constraint, NFA, as a percentage of GDP are set to be constant over time, and the prevailing CA balance is calculated after assuming values for the long-run output growth rate, inflation, and rates of return on foreign assets and liabilities.<sup>20</sup>

The second step in the ES approach is identical to the final step in the MB approach, in which the equilibrium exchange rate is calculated to close the gap between the equilibrium CA calculated in the previous step and the medium-term forecast of the CA balance.

## **7.2. Appendix B: Sample and variables**

Exchange rate assessments based on the CGER models were undertaken by the IMF in fall 2006, spring 2007, fall 2007, spring 2008, fall 2008, spring 2009, fall 2009, spring 2010, fall 2010, spring 2011, and fall 2011.

Advanced economies and emerging market economies are chosen on the basis of the IMF's World Economic Outlook (WEO) categorization in 2015. Advanced economies are Australia, Canada, Czech Republic, Euro area, Japan, Korea, Sweden, Switzerland, UK, and the USA. Emerging market economies are Argentina, Brazil, Chile, China, Colombia, Hungary, India, Indonesia, Israel, Malaysia, Mexico, Poland, Russia, South Africa, Thailand, and Turkey.

Open economies are defined as countries whose average share of exports plus imports in GDP was higher than 70 percent during the period 2006–2011, according to the World Development Indicators. Open economies are the Czech Republic, Hungary, Korea, Malaysia, Poland, Switzerland, and Thailand. Closed economies are the remaining countries in the sample: Argentina, Australia, Brazil, Canada, Chile, China, Colombia, Euro area, India, Indonesia, Israel, Japan, Mexico, Russia, South Africa, Sweden, Turkey, UK, and USA.

---

<sup>20</sup> One important shortcoming of this approach is that the impact of the exchange rate on NFA is neglected in the calculation of the equilibrium current account, i.e., valuation losses or gains in NFA due to exchange rate movements are assumed to be zero in the inter-temporal constraint.

**Table B1: Variables used in the Empirical Analysis**

Variable name	Definition	Source
IMF Misalignment	Percentage of undervaluation or overvaluation of the currency. Calculated as the simple average of the MB, ERER and ES Misalignments	IMF <i>Office Memorandums</i> on the Exchange Rate Assessments for Selected Advanced and Emerging Market Economies
MB Misalignment	Percentage of undervaluation or overvaluation of the currency based on the Macroeconomic Balance Approach	IMF <i>Office Memorandums</i> on the Exchange Rate Assessments for Selected Advanced and Emerging Market Economies
ERER Misalignment	Percentage of undervaluation or overvaluation of the currency based on the Equilibrium Real Exchange Rate Approach	IMF <i>Office Memorandums</i> on the Exchange Rate Assessments for Selected Advanced and Emerging Market Economies
ES Misalignment	Percentage of undervaluation or overvaluation of the currency based on the External Sustainability Approach	IMF <i>Office Memorandums</i> on the Exchange Rate Assessments for Selected Advanced and Emerging Market Economies
$\Delta \ln$ REER	Natural logarithm return on the real trade weighted exchange rate between the assessment and the end of the horizon (broad index)	Bank for International Settlements
Dummy (floating)	Takes value 1 for countries which were classified as free floating or floating exchange rate regimes between the time of the IMF assessment and the end of the horizon considered	IMF <i>Annual Report on Exchange Arrangements and Exchange Restrictions</i>

# Recent SNB Working Papers

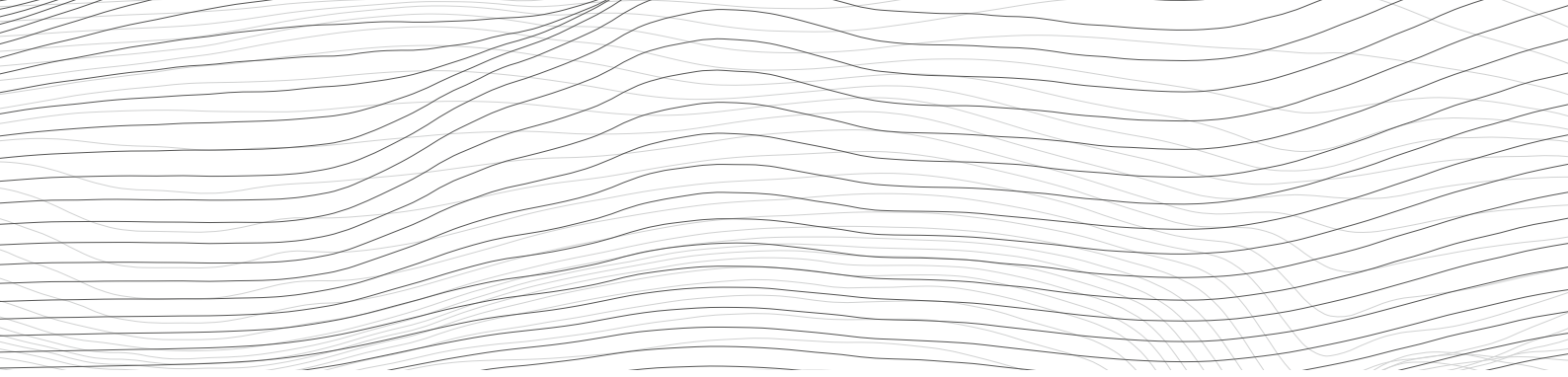
---

- 2016-2 Pinar Yeşin: Exchange Rate Predictability and State-of-the-Art Models.
- 2016-1 Sandra Hanslin and Rolf Scheufele: Foreign PMIs: A reliable indicator for exports?
- 2015-13 Thomas Nellen: Collateralised liquidity, two-part tariff and settlement coordination.
- 2015-12 Jacob Gyntelberg, Mico Loretan and Tientip Subhanij: Private information, capital flows, and exchange rates.
- 2015-11 Philip Sauré: Time-intensive R&D and unbalanced trade.
- 2015-10 Nikola Mirkov and Andreas Steinhauer: Ben Bernanke vs. Janet Yellen: Exploring the (a)symmetry of individual and aggregate inflation expectations.
- 2015-9 Aleksander Berentsen, Sébastien Kraenzlin and Benjamin Müller: Exit Strategies and Trade Dynamics in Repo Markets.
- 2015-8 Thomas Nitschka: Is there a too-big-to-fail discount in excess returns on German banks' stocks?
- 2015-7 Alin Marius Andries, Andreas M. Fischer and Pinar Yeşin: The impact of international swap lines on stock returns of banks in emerging markets.
- 2015-6 Jens H.E. Christensen and Signe Krogstrup: Transmission of Quantitative Easing: The Role of Central Bank Reserves.
- 2015-5 Petra Gerlach-Kristen and Seán Lyons: Mortgage arrears in Europe: The impact of monetary and macroprudential policies.
- 2015-4 Reto Foellmi, Sandra Hanslin and Andreas Kohler: A dynamic North-South model of demand-induced product cycles.
- 2015-3 Katarina Juselius and Katrin Assenmacher: Real exchange rate persistence: The case of the Swiss franc-US dollar rate.
- 2015-2 Lucas Marc Fuhrer, Basil Guggenheim and Silvio Schumacher: Re-use of collateral in the repo market.
- 2015-1 Pinar Yeşin: Capital flow waves to and from Switzerland before and after the financial crisis.
- 2014-13 Thomas Nitschka: Have investors been looking for exposure to specific countries since the global financial crisis? – Insights from the Swiss franc bond market.
- 2014-12 Christian Grisse and Thomas Nitschka: Exchange rate returns and external adjustment: evidence from Switzerland.
- 2014-11 Rina Rosenblatt-Wisch and Rolf Scheufele: Quantification and characteristics of household inflation expectations in Switzerland.
- 2014-10 Gregor Bäurle and Daniel Kaufmann: Exchange rate and price dynamics in a small open economy – the role of the zero lower bound and monetary policy regimes.
- 2014-9 Matthias Gubler and Christoph Sax: Skill-Biased Technological Change and the Real Exchange Rate.

From 2015, this publication series will be renamed *SNB Working Papers*.

All SNB Working Papers are available for download at: [www.snb.ch](http://www.snb.ch), Research

Subscriptions or individual issues can be ordered at:  
Swiss National Bank  
Library  
P.O. Box  
CH-8022 Zurich  
Phone: +41 58 631 11 50  
Fax: +41 58 631 50 48  
E-mail: [library@snb.ch](mailto:library@snb.ch)



SCHWEIZERISCHE NATIONALBANK  
BANQUE NATIONALE SUISSE  
BANCA NAZIONALE SVIZZERA  
BANCA NAZIUNALA SVIZRA  
SWISS NATIONAL BANK

