

Confederation debt management since 1970

Basil Guggenheim, Mario Meichle and Thomas Nellen

SNB Working Papers

7/2018



Legal Issues

DISCLAIMER

The views expressed in this paper are those of the author(s) and do not necessarily represent those of the Swiss National Bank. Working Papers describe research in progress. Their aim is to elicit comments and to further debate.

COPYRIGHT©

The Swiss National Bank (SNB) respects all third-party rights, in particular rights relating to works protected by copyright (information or data, wordings and depictions, to the extent that these are of an individual character).

SNB publications containing a reference to a copyright (© Swiss National Bank/SNB, Zurich/year, or similar) may, under copyright law, only be used (reproduced, used via the internet, etc.) for non-commercial purposes and provided that the source is mentioned. Their use for commercial purposes is only permitted with the prior express consent of the SNB.

General information and data published without reference to a copyright may be used without mentioning the source. To the extent that the information and data clearly derive from outside sources, the users of such information and data are obliged to respect any existing copyrights and to obtain the right of use from the relevant outside source themselves.

LIMITATION OF LIABILITY

The SNB accepts no responsibility for any information it provides. Under no circumstances will it accept any liability for losses or damage which may result from the use of such information. This limitation of liability applies, in particular, to the topicality, accuracy, validity and availability of the information.

ISSN 1660-7716 (printed version)
ISSN 1660-7724 (online version)

© 2018 by Swiss National Bank, Börsenstrasse 15,
P.O. Box, CH-8022 Zurich

Confederation debt management since 1970

Basil Guggenheim^a Mario Meichle^b Thomas Nellen^{c,d,e}

May 15, 2018

Abstract

This paper presents new data vintages on marketable debt emissions and total outstanding debt. The data are used to analyze the Swiss Confederation's issuing behavior and debt management. Issuing behavior became more regular and demand-oriented during the early 1990s. The Treasury actively manages roll-over risk by increasing bond maturity with increasing marketable debt to GDP levels. Furthermore, the Treasury engages in active but asymmetric, one-sided interest rate positioning. In other words, the Treasury uses only bonds to affect debt maturity and does so only when the interest rate environment is favorable to lock-in interest rates by issuing longer-term bonds.

Keywords: government debt, government debt management, government debt maturity

JEL Classification: E63, H63

^a Swiss National Bank, Money Market, Börsenstrasse 15, CH-8022 Zürich, basil.guggenheim@snb.ch

^b Federal Department of Finance, Federal Finance Administration – Federal Treasury, Monbijoustrasse 118, CH-3003 Bern, mario.meichle@efv.admin.ch

^c Swiss National Bank, Financial Stability - Oversight, Bundesplatz 1, CH-3003 Bern, thomas.nellen@snb.ch

^d The views expressed in the paper are those of the authors and do not necessarily reflect those of the Federal Department of Finance and the Swiss National Bank.

^e The authors are indebted to Katrin Assenmacher, Alain Geiger, Patrick Halbeisen, Werner Hermann, Evelyn Ingold, Sébastien Kraenzlin, Signe Krogstrup, Thomas Moser, Thomas Nitschka, Enzo Rossi, Felix Schafroth, Andy Sturm, Jens Schweizer, Daniel Wittwer, Tobias Beljean, Kurt Buff, an anonymous referee, and to the participants of the 11th PNB-SNB Joint Seminar 2014, the 2015 Annual Meeting of the Swiss Statistics and Economics Association and the SNB Brown Bag Seminar.

1. Introduction

This paper presents newly harvested data on all emissions of marketable Confederation debt from 1970 onwards. These data include new emissions, replenishments and sales of own tranches. Marketable debt consists of Treasury bonds with maturities greater than one and up to fifty years (Eidgenossen), zero-coupon Treasury notes with maturities ranging between one month and eight years (Schatzanweisungen) and zero-coupon Treasury bills with maturities between one week and one year (Geldmarktbuchforderungen). Additionally, we present data on yearly debt composition extracted from the state financial statement (SFS; Staatsrechnung), i.e. the Confederation's finance and balance sheet report.

These data are annual, and serve to disentangle total debt into marketable debt and internal and external non-marketable debt. Increasing government-internal liabilities and changes in debt accounting led to an increase of total debt in the late 1970s and early 1980s. This was accompanied by a growth in the internal non-marketable debt share. From the 1990s onwards, this increasing marketable debt share was driven by the strong increase in the total debt level of the Confederation and a shift towards external funding sources. External non-marketable debt has never reached a sizeable share of total debt, but was regularly used to fund increasing debt levels during the 1990s. The introduction of the debt brake in 2003 allowed the Confederation to bring debt dynamics under control. Since 2006, the total debt level has been decreasing, and has been accompanied by a slight increase in the non-marketable debt share.

The Treasury's debt-issuing behavior became more regular and demand-oriented with increasing debt levels in the 1990s. Before this, the Treasury's issuing behavior was more infrequent and largely driven by changing funding requirements depending on budget outcomes or changes in internal funding sources. Exceptions were the more regular emission activities for notes and bills. While notes only slowly ceased after the introduction of bills in 1979, their issuance was rather insignificant and – related to discount-window needs – became demand-driven after 1979. Several changes in the early 1990s marked the move to regular debt management. The possibility of replenishing outstanding bonds by means of a regular auction process was introduced in 1991. In 1993, the Treasury introduced so-called own tranches, i.e. the Treasury sells own tranches directly to one or several investors. These changes coincided with the Treasury serving more and more maturities when issuing new bonds or replenishing existing bonds. Furthermore, the Treasury introduced an emission calendar in 1992, informing investors about auction dates and expected yearly gross and net volumes. While the introduction of replenishments contributed to a more frequent and regular issuing pattern, both the use of direct placements of own tranches and the use of replenishments further indicate the Treasury's demand orientation.

Harvested data allow us to analyze marketable debt's maturity composition and the Treasury's debt management. We do so by focusing on bond maturity and the share of short-term debt as the two instruments best capturing changes of marketable debt's maturity composition. The Treasury adjusts the outstanding bond maturity in response to changes in marketable debt rather than non-marketable debt. This is consistent with the view that internal non-marketable debt represents a stable source of funding as it is subject to slow-moving political processes and as such is not considered when managing roll-over and interest rate risk. The share of short-term debt does not change, neither in response to marketable debt nor to non-marketable debt. This is consistent with the use of short-term debt for purposes of cash management.

The Treasury increases marketable debt maturity with an increasing marketable debt-to-GDP ratio to manage roll-over and interest rate risk. While we cannot rule out that the positive correlation between increasing maturity and marketable debt to GDP levels may be driven to some degree by technical factors,¹ the qualitative and quantitative evidence provided over a period of 46 years with constant, increasing and decreasing debt-to-GDP levels suggests that the Treasury actively steers roll-over and interest rate risk. The evidence further indicates that the Treasury engages in active but asymmetric and one-sided interest rate positioning. Interest rate positioning is asymmetric, as the Treasury mostly relies on bonds to influence debt maturity. In other words, the share of short-term debt seems to be less actively used to affect marketable debt maturity. This points rather to a cash management-driven use of short-term debt. Furthermore, qualitative evidence from SFS indicates that the Treasury engages in one-sided interest rate positioning. In other words, the Treasury seems to increase the maturity of bonds only in response to a favorable interest rate environment, but appears not to actively reduce debt maturity when the interest rate environment is unfavorable. This can be interpreted as long-term interest-rate fixing in order to lock-in a favorable interest rate environment to reduce and stabilize the future interest burden.

The next section provides a short review of the literature. Section 3 presents data on emissions and total outstanding debt. Section 4 is devoted to debt management and issuance behavior. Section 5 discusses the maturity composition of marketable debt and factors that influence it. Section 6 provides an econometric analysis of the issuing behavior of the Treasury. Section 7 concludes.

2. Literature

There is no literature on the Confederation's debt management, with the notable exception of Ranaldo and Rossi (2016).² They analyze a specific aspect of Swiss debt management, sketching out the history of the Confederation's debt auctions that started in 1980. They describe how the institutional set-up evolved over time (i.e. bidding requirements, class of bidders, communication, etc.), and they elaborate on why the Confederation chose the uniform-price auction as its preferred type of emission procedure. We fill a void in the literature by looking at the Confederation's debt management from a broader perspective.

This relative dearth of Swiss literature mirrors the general scarcity of debt-management literature. Favero et al. (1999) and Missale (1999) provide the most recent comprehensive studies on debt management. Later on, Garbade (2004), Garbade and Ingber (2005), Garbade (2007), Garbade and Rutherford (2007), and Garbade (2008) analyze particular aspects of U.S.

¹ Constant issuing behavior in tandem with an increasing level of marketable debt to GDP automatically results in an increasing maturity when the issued maturity is higher than the outstanding maturity.

² The literature on Swiss government debt is focused almost exclusively on the Confederation's debt brake and its cantonal pendants. Most recent papers are found in the 2013 special issue of the Swiss Journal of Economics and Statistics devoted to the tenth anniversary of the Confederation's debt brake. Papers in this special issue and in Geier (2011a,b) provide an extensive overview of the existing literature and an in-depth analysis of the debt brake. Different authors investigate fiscal mechanisms in Swiss cantons. Marti Locher (2015) shows that due to the federal structure and high autonomy of the Swiss cantons, cantonal fiscal rules differ broadly in their purpose, institutional framework, design and time of introduction. Her empirical analysis, focusing on three fiscal rules implemented in the 1990s, shows that the efficacy of these fiscal rules is highly dependent on the institutional framework and the design of the rule. Earlier literature such as Kirchgässner (2013) concludes that with well-designed institutions, federal states might be able to better follow a sustainable fiscal policy. Beljean and Geier (2013) describe how a binding ceiling for expenditure has changed the budget process to enable it to achieve fiscal objectives more successfully. They further argue that the rule is best set up as a simple and transparent mechanism. More relevant in our context, the stabilization of nominal debt around 2005 is ascribed to the debt brake. Earlier relevant literature includes Debrun, Epstein and Symansky (2008), Feld and Kirchgässner (2008), Bodmer (2006), Colombier (2004), Himmel and Geier (2004), Bruchez (2003), Geier and Bodmer (2003), Danning (2002) and Colombier and Frick (2001).

debt management, while de Haan and Wolswijk (2005) provide an EMU-wide perspective motivated by the introduction of the euro in 1999. From a practitioner's perspective, working papers of supranational institutions such as the OECD, IMF or World Bank provide insights into a broad range of issues related to public debt management. Most of these studies are cited in the recently revised Guidelines for Public Debt Management (IMF, 2014). We enrich the literature by providing a Swiss debt management perspective.

This paper focuses on the presentation and analysis of the newly harvested Confederation debt data. In particular, we analyze the Confederation's debt composition, its issuance behavior and its debt management strategy. We just mention two papers in this field and refer to other papers cited therein.

Greenwood et al. (2015) who understand optimal debt maturity as a simple tradeoff. On the one hand, due to its liquidity and its safety, government debt is valued above commercial debt. Thus, if the government tilts its issuance to shorter maturities, it faces lower expected financing costs. On the other hand, given that future market conditions are unpredictable, a strategy of short-term financing exposes the government to roll-over and interest rate risk. As a number of other papers have noted, these risks may lead to real costs insofar as they could increase tax volatility.³

Garbade and Rutherford (2007) analyze data on U.S. federal debt, suggesting that the U.S. Treasury actively manages its issuance and repurchases to achieve a target maturity of outstanding debt. Greenwood et al. (2015) estimate an equation that can be interpreted in terms of a partial adjustment model of the maturity of government debt. They find the average maturity of newly issued debt to increase with the debt-to-GDP ratio. Thus the government gradually adjusts the maturity of its new issuance towards longer-term debt if the debt to GDP level increases. We provide similar evidence in the Swiss context.

Our data harvest newly allows to address related research fields with Swiss data. Renewed interest in a particular aspect of debt management, namely the maturity structure of government debt, was triggered by the large-scale asset purchases in the U.S. Taking earlier scholars such as Culbertson (1957), and Modigliani and Sutch (1966) as their starting point, there is a growing literature that documents significant deviations from the predictions made by standard asset-pricing models with regard to the term structure of interest rates. To mention two recent papers, Krishnamurthy and Vissing-Jorgensen (2012) find that the liquidity and safety of government debt drive down their yield relative to other assets, while Greenwood and Vayanos (2014) analyze how government debt maturity and the debt-to-GDP ratio influence the term structure of interest rates.

The recent financial crisis also led to a rethinking of the relationship between monetary policy and debt management. Greenwood et al. (2015) propose debt management as a macroprudential instrument. Insofar as there are negative externalities associated with private money creation, the government should tilt its issuance more towards short maturities. Because the government has a comparative advantage relative to the private sector in bearing refinancing risk, the government may crowd out the private sector's excessive use of short-term debt.⁴ Greenwood et al. (2014) also analyze how monetary policy at the zero lower bound interacted with government debt management during the financial crisis. While the Federal Reserve System

³ See, e.g. Barro (1979), Lucas and Stokey (1983), Bohn (1990), Angeletos (2002), Aiyagari et al. (2002), and Nosbusch (2008).

⁴ See also Stein (2012) and Krishnamurthy and Vissing-Jorgensen (2014) for similar arguments.

(FRS) tried to reduce long-term debt, the U.S. Treasury tilted its debt management towards long-term debt issuance, partially off-setting the effects targeted by the FRS's quantitative easing programs. They suggest revising institutional arrangements to promote greater cooperation between the U.S. Treasury and the FRS in setting debt management policy, particularly during times when monetary policy is constrained (for instance by the effective lower bound).⁵

3. Data and debt composition

We harvested two sets of data to present an overall picture of the Confederation's debt developments since 1970. First, data on Confederation emissions of marketable debt were harvested. Secondly, yearly data on the Confederation's total outstanding debt and liabilities were collected.

Data on emissions stem from diverse sources, ranging from an internal database of the Swiss Federal Treasury⁶ (henceforth the Treasury), publications of the SNB, archive material and IT database material of the SNB, to data archived by SIX Telekurs. The data cover the period from 1848 onwards. Appendix A provides an in-depth description of the diverse sources and explains how we verified the data. With two caveats, emission data are judged to be complete from 1970 onwards: emission data on notes might be missing for the years 1980 to 1982; furthermore, until 2009 the Treasury would sometimes buy back bonds shortly before the due date. Bearing these two points in mind, it otherwise holds true that the data are correct at year-end, but may exhibit negligible intra-yearly distortions until 2009.

Yearly data on the Confederation's total debt were taken from the state financial statements (SFS, various years), published by the Federal Finance Administration (FFA), Geier (2011a), and the *Schuldenbericht* (2006) – a report by the Federal Council on the development of public debt since 1950. These data sources provide historical data on the level of total debt. Additionally, the SFS allows us to decompose the Confederation's debt into its different funding sources (see Appendix A for a more detailed description). GDP data are taken from the Swiss Federal Statistical Office and the State Secretariat for Economic Affairs.⁷ Additionally, the 3-month Libor / Euromarket interest rate and the 10-year yield on government bonds is publicly available on the SNB's website. The data start in 1974.

The Confederation's total debt can be categorized into external and internal debt. External debt is financed either by issuing securities or by any other form of funding obtained from the market, such as bank loans. Internal debt consists of internal liabilities, e.g. deposits from government agencies that use the Treasury as a bank.

We define marketable debt as securities issued either in the form of Treasury bills (*Geldmarktbuchforderungen*; henceforth bills), Treasury notes (*Schatzanweisungen*; notes) or Confederation bonds (*Eidgenossen*; bonds). Bond emission data include direct sales of own tranches to investors and replenishments. While bonds have yearly fixed coupon payments,

⁵ The suspension of bond issuance by the Danish government in early 2015 to limit FX inflow and ease upward pressure on the Danish krone is an example of such an institutional cooperation.

⁶ The Federal Treasury, a unit within the Federal Finance Administration, which is part of the Federal Finance Department, conducts debt management for the Confederation.

⁷ Note that GDP data were revised in autumn 2014 due to the transition to a new accounting system (ESA, 2010). This revision had a substantial impact on the level and the different accounting aggregates, though it left growth rates almost unaffected. For the regression analysis, growth rates are of particular importance. Also, the new data according to ESA 2010 starts in 1980, while our analysis goes back to 1970. For these reasons, we keep to pre-revision data according to ESA 95.

Treasury notes and Treasury bills are issued as zero-coupon instruments. The emission data harvested include value, maturity (settlement and redemption date), yields, coupon payment, and emission price. Table 1 shows descriptive statistics.⁸

Table 1: Descriptive statistics of Swiss Confederation marketable debt issuance data from 1970 to 2016

	All	Bonds	Bills	Notes
Number of issues	3098	1085	1373	640
CHF (millions)				
Total	1,218,711	196,006	992,494	30,211
Mean	393	181	723	47
SD	396	233	329	66
Min	1	1	75	1
Max	2,512	1,553	2,512	385
Term to maturity				
Mean	5.4	14.5	0.3	1.0
SD	8.7	9.4	0.2	1.1
Min	0.1	2.0	0.1	0.1
Max	50.0	50.0	1.0	8.0
Yield (%)				
Mean	2.756%	3.191%	1.809%	4.049%
SD	2.075%	1.325%	2.203%	1.880%
Min	-1.521%	-0.545%	-1.521%	0.110%
Max	9.102%	7.815%	9.102%	8.875%

Emission data consist of 3,026 issuances; approximately one third are emissions of bonds. In total, debt with a nominal value of CHF 1.19 trillion was issued between 1970 and 2016; CHF 0.97 trillion alone is due to the more frequent bill emissions owing to the short-term nature of the instrument. The average issue size was CHF 184 million for bonds, CHF 734 million for bills and a relatively small amount of CHF 47 million for notes. As bond emissions include piecewise replenishments of already outstanding bonds from 1991 onwards as well as smaller-sized tap sales of own tranches of bonds from 1993 onwards, the variability of the bond issue volume is higher than for other debt instruments. The maximum issue amount was CHF 1.6 billion for bonds, CHF 385 million for notes, and CHF 2.5 billion for bills. On average, the term to maturity at issuance for bonds was 14.3 years.⁹ Short-term debt instruments such as bills (notes) show a much shorter average term to maturity of slightly more than 4 months (1 year). Notes were mostly issued to banks, partly due to specific demand, and thus cover a

⁸ In reading descriptive statistics, it is important to remember that notes were largely replaced by bills from 1979 and particularly from 1986 onwards (SFS, 1986). Afterwards, notes issuance remained low and ceased altogether in 2005. Also, notes were often used to satisfy particular demands. For instance, longer maturities were issued due to specific demand from Liechtenstein banks in need of securities eligible for the SNB's Lombard facility (SFS, 1986, and Nellen, 2015). Three convertible bonds – issued between 2005 and 2007 to reduce the government's equity stake in the former public telecommunications provider Swisscom – are excluded from the database since they are not comparable with conventional bond issuance.

⁹ Contrary to the following sections, the average term to maturity in Table 1 is not volume-weighted.

broader range of maturities between 1 month and 8 years. On average, debt issued earned a yield of 2.76% (with a broad range of yields including negative yields).¹⁰

We further collected yearly data on total debt from the SFS (various years), Geier (2011a) and the *Schuldenbericht* (2006). We use the series by Geier (2011a) as an accepted approximation of the long-term dynamics of the Confederation's debt.¹¹ More importantly, besides identifying the total debt level of the Confederation, balance-sheet data allow us to decompose total debt into the different funding sources, such as external marketable debt and internal non-marketable debt.

The most important components of non-marketable debt across time were deposits of related institutions (e.g. railway, post, social insurances, etc.), deposits of employees at the Confederation's own savings bank (the employees' credit union), liabilities to the Confederation's pension fund, and accounting-related liabilities such as current accounts of provinces (cantons) or other short-term liabilities. We will refer to these debt components as non-marketable debt.¹²

External debt mainly consists of marketable debt, i.e. funding obtained from issuing marketable debt instruments. In addition, there are other rarely used forms of external market funding across the sample period, such as money market credits, fixed deposits of retail clients, or other forms of bank loans.

Figure 1 provides a decomposition of total debt into marketable and non-marketable debt, i.e. sources of external market funding, the different sources of internal funding, and other non-marketable debt sources.

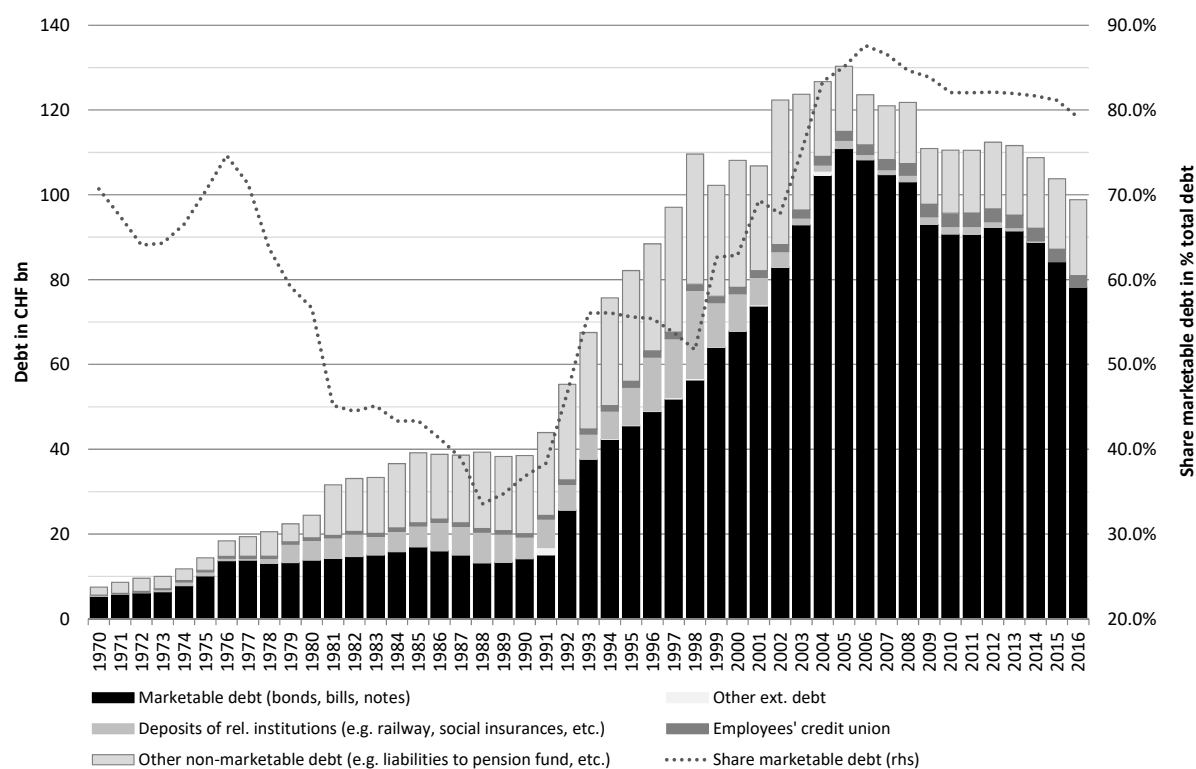
Total debt increases until the mid-1980s, then remains constant until 1990. The increase in debt from 1980 to 1981 stems mainly from a change in the debt definition, in particular the inclusion of liabilities against the Confederation's pension fund. Total debt increases greatly during the 1990s, reaching a record high of almost CHF 130 billion in 2005, when it started to decrease again. The main reasons for the debt increase were substantial deteriorations in the ordinary fiscal balance, restructuring and the financial recovering of government-owned companies, loans to unemployment insurance, and out-financing pension funds (*Schuldenbericht*, 2006, and Beljean & Geier, 2013). In 2003, a debt brake mechanism came into force that led to a stabilization of the Confederation's total debt until 2005. The ongoing budget surpluses have been primarily responsible for supporting the reduction of total debt since 2006.

¹⁰ Conventional bond yields reached their low with the sale of an own tranche of the 2022 bond in 2015 at -0.545%. Bills have been issued with negative yields since summer 2011. Historical lows of around -1.5% were reached at the end of 2015.

¹¹ Data on total debt shows several structural breaks due to different debt definitions and accounting practices. Thus changes in the level of debt, in particular at the end of the 1970s and 1980s, must be interpreted carefully. In addition, debt reported in the state financial statements may differ slightly from debt reported according to Maastricht or IMF criteria and their definitions. Figure A2 in Appendix A shows the levels of debt, depending on the different debt definitions. Geier (2011a) provides an approximation of the debt dynamics.

¹² Throughout the 1990s and until 2005, internal debt components were strongly affected by outsourcing and the (partial) privatization processes of public corporations (e.g. postal and telecommunication services), the external financing of related pension funds and the discontinuation of central treasury services by the Confederation for these institutions.

Figure 1: Decomposition of Swiss Confederation total debt



The composition of total debt, as marketable debt and non-marketable debt, changes with total debt levels. Whereas marketable debt increased until 1976, it remained more or less constant until 1991. Increasing total debt levels until 1991 were mainly due to increasing internal liabilities against the Confederation's pension fund and their inclusion in the debt aggregate. In addition, increasing deposits of related institutions fueled the Confederation's liabilities. From the early 1990s until 2005, sizable deficits and other financial burdens outlined above forced the Confederation to issue more and more marketable debt as internal funding sources remained constant (and slightly decreased in the late 1990s). In general, the government rarely had recourse to other external debt. With the exception of the early 1990s, when all sources had to be used to obtain sufficient funding, these forms of debt tended to play a role within cash management or retail funding. However, their overall importance remained negligible in terms of total debt.

The external marketable debt share decreased from the mid-1970s until the beginning of the 1980s. This was mainly related to increasing internal funding through current account and term deposits of government-related institutions. The external debt share further decreased during the 1980s due to the extension of the debt definition and increasing internal liabilities against the pension fund and other internal funding sources. From 1990 onwards, increasing total debt levels had to be financed primarily by external debt, in particular by issuing marketable debt in the form of bills, notes and bonds. This increased the share of external debt over time, peaking at 92% in 2006. After 2006, slightly decreasing levels of debt together with stable internal liabilities and funding resulted in a slightly decreasing level of marketable debt, reaching around

80–85% during the last 5 years. Although the share remained almost constant during these years, there was again a change in the composition of the internal non-marketable debt. Liabilities against the Confederation’s pension fund were reduced from 2000 onwards and vanished after 2007.¹³ This reduction in internal debt was, however, compensated through an increasing share of other internal non-marketable debt, such as current accounts of cantons or other short-term liabilities (e.g. withholding tax claims).

Figure 2: Components of marketable debt in percentages of marketable debt

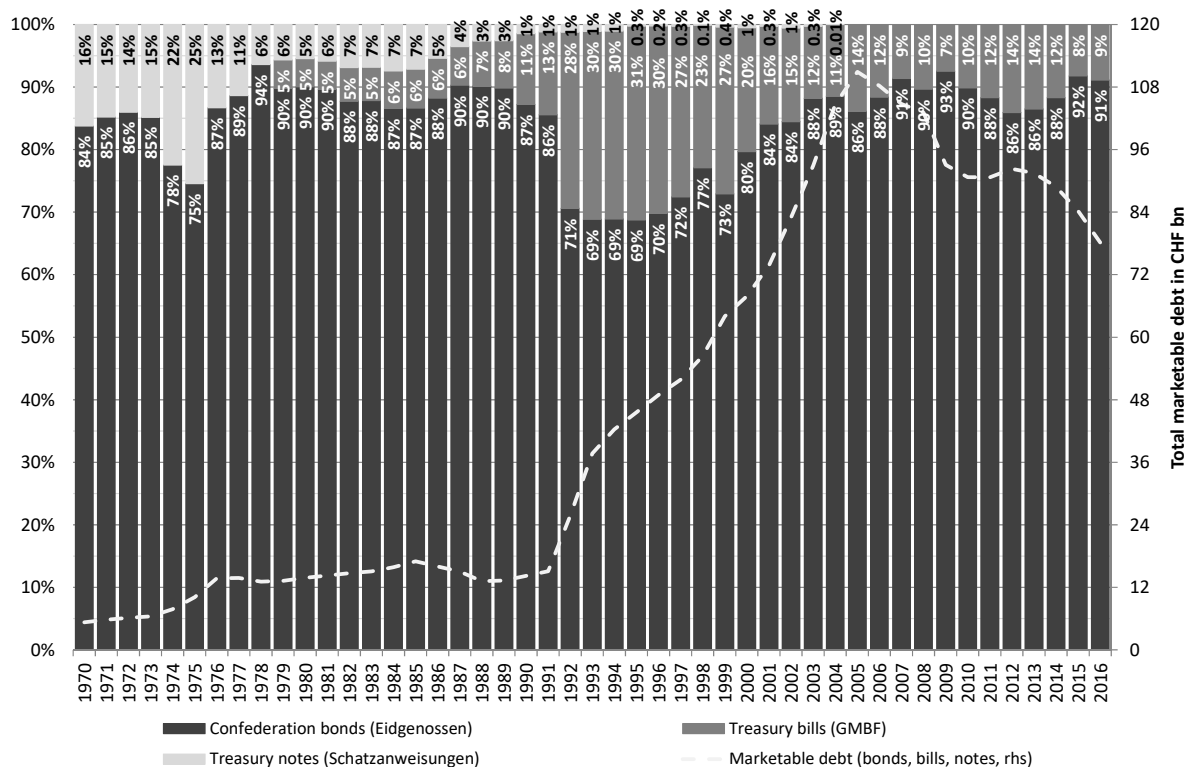


Figure 2 provides a decomposition of marketable debt. Unsurprisingly, the composition of marketable debt is characterized mainly by bonds. Notes were issued to a non-negligible extent, mainly during the 1970s. The 1980s saw a decreasing share of notes. This was related to the introduction of bills in 1979, with the aim of establishing a CHF money market and of increasing the range of funding instruments.¹⁴ The last note was finally issued in 2005. Bills gained an increasing share of marketable debt during the early 1990s, when the Treasury initially financed substantial deficits and other financial burdens by issuing short-term debt. This was further driven by cost concerns due to the high level of the interest rate at the time.¹⁵ In 1995, the share of bills started to decline again. Since 1995, the Treasury has steadily increased its interest commitment in response to declining interest rates, on average issuing relatively more bonds.¹⁶ Since 2003, the share of bills has remained constant, fluctuating at around 10–15%. The decline in marketable debt since 2006 has been managed by somewhat symmetric reductions in both outstanding bonds and bills. Before 2012, the lowered funding need led to an increase in the share of bills that was connected to the decline in bond issuances.

¹³ This is related to the foundation of the autonomously organized, externally financed Federal pension fund PUBLICA. See SFS (2008).

¹⁴ See SFS (1979).

¹⁵ See SFS (1990–1992).

¹⁶ See SFS (1995–2005).

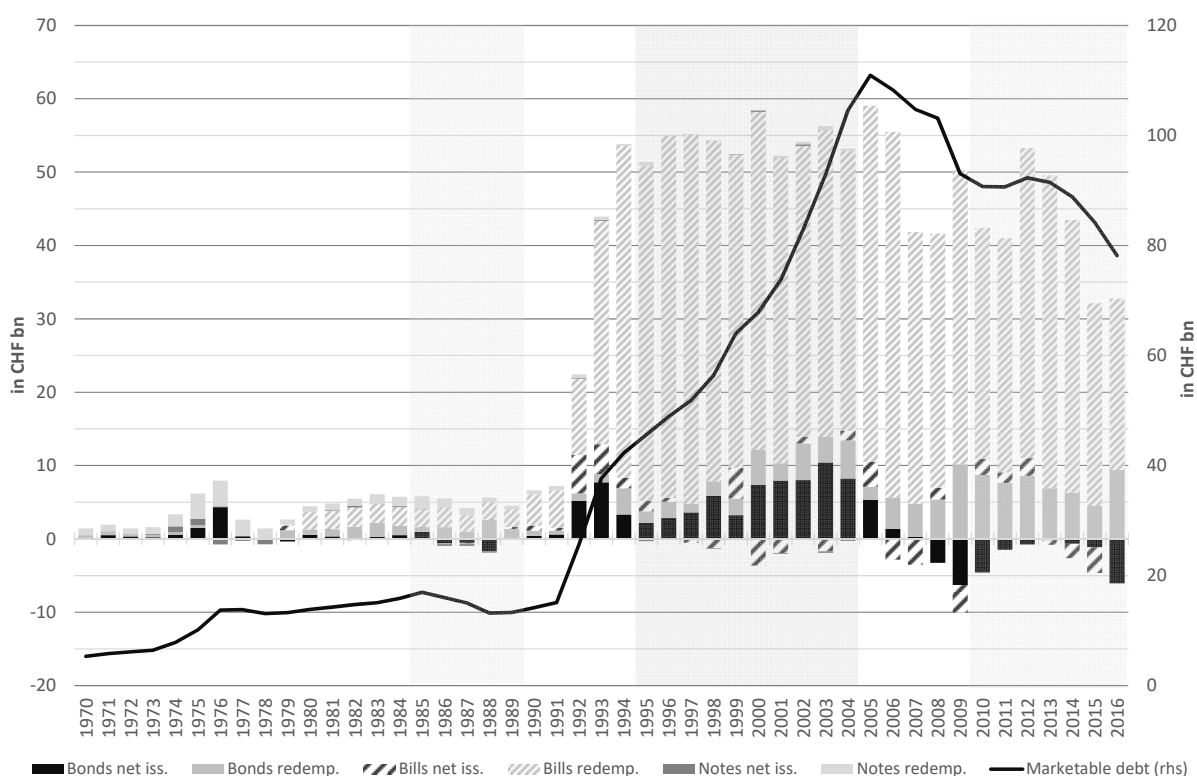
The more recent decline in the share of bills indicates that ultra-low interest rates and the reduced funding need have prompted a growing reliance on bond issuances.

An increasing share of bills is often related to higher amounts of liquidity needed at the end of the year and the beginning of the next year, to prepare bond redemptions early in that year. This seems to have been the case in 2008 and in the years from 2011 to 2013.¹⁷ In 2015, the share of bills dropped further, as the negative interest rate environment caused withholding tax and federal direct tax to be delivered earlier by the cantons. In order to lower the level of liquidity, the Treasury reduced market funding and, in particular, considerably reduced bills issuance.¹⁸

4. Marketable debt issuance

Figure 3 shows yearly debt redemptions and net issuances, i.e. debt issued minus debt coming due. The grey-shaded areas in Figure 3 mark years of long-term interest rate positioning. These years take into account only the self-declarations by the Confederation in the SFS. During these periods, the Treasury claimed to have engaged in longer-term maturities to profit from a low interest rate level.

Figure 3: Net issuance and redemptions of decomposed marketable debt



In the mid-1970s, marketable debt increased slightly and was primarily funded with an increasing net issuance of bonds,¹⁹ whereas the issuance of notes was mainly determined by redemptions and market demand. Changes in total debt in the late 1970s and 1980s were primarily covered by increasing internal non-marketable debt, i.e. by increasing internal

¹⁷ See e.g. SFS (2012).

¹⁸ See Federal Finance Administration (2016).

¹⁹ See SFS (1973–76)

funding, term deposits and changes in the debt definition. Thus, constant marketable debt implied that the issuance of all debt instruments was determined by debt coming due and that the net issuance was close to zero. This was particularly the case for the newly issued bills and notes. These instruments' near constant share in marketable debt during this period (see Figure 2) is reflected in their zero net issuance and near-constant redemption values in Figure 3. In the second half of the 1980s, the Confederation faced lower funding needs and a lower or negative net issuance of bonds. However, the Treasury considered the interest rate environment as favorable. Consequently, the Treasury increased its interest rate commitment to reduce the long-term interest burden.²⁰ Facing a lower net issuance of bonds, the Treasury therefore called in or converted callable higher-yielding bonds into lower-yielding, newly issued bonds.

Since the majority of bills issued has a term to maturity below one year, their total yearly issued volume is naturally greater than the issued volume of longer-term debt instruments. As the Treasury started a general expansion of the bill program to build up a Swiss franc money market in around 1990 (which also increased the relative importance of this funding instrument as displayed in Figure 2), this is when bill redemption started to grow. On top of this, and despite the inverse term-structure at the time, the Treasury regarded the prevailing longer-term interest rate level as high. Thus the Treasury increased its short-term debt issuance beyond the build-up intended to promote a Swiss franc money market.²¹ After 1990, the issuance of notes only played a negligible role (see also below).

With the increasing funding needs in the early 1990s, the issuance of both bills and bonds substantially exceeded debt coming due, leading to an increase in net issuance of both instruments. Increasing funding needs persisted in the late 1990s due to continued deficits and in the first half of the 2000s due to the liberalization of former public entities.²² Between 1995 and 2005, in the light of the downward trend in interest rates, the Treasury attempted to take advantage of lower funding costs and covered its funding needs increasingly by bond issuance. In the years after 1995, long-term interest rate fixing was intensified by calling in callable outstanding higher-yielding bonds and issuing longer-termed maturities.²³ Between 1995 and 2005, the share of bills of marketable debt remained constant or even decreased to levels of around 10% to 15% of outstanding marketable debt (see Figure 2), as increases in marketable debt were financed with a net issuance of bonds that was occasionally greater than the negative net issuance of bills. The fluctuations in the net issuance of bills are also a result of increasing redemptions of bonds issued in the 1990s, indicating that the issuance of bills was also driven by liquidity management needs (such as bridge-funding between the time of bonds coming due and the time of new bonds being issued).

Decreasing government debt since 2006 has changed the picture. In conjunction with reduced funding needs, maturing bonds issued during the 1990s have led to a negative net issuance of bonds since 2006. Between 2006 and 2010, certain factors reduced funding needs and led to a negative net issuance of either bills or bonds. First, before being transferred to the old age and survivors' insurance (OASI), the funds from the sales of the surplus gold reserves of the SNB were temporarily managed by the Confederation between 2005 and 2007. Secondly, the Confederation profited from the proceeds of the ongoing sale of Swisscom shares, particularly

²⁰ See SFS (1983–89).

²¹ See SFS (1990 and 1991).

²² Notable examples are the partial privatization of telecommunication services, the liberalization of postal services, the external financing of corresponding pension funds and the disbanding of the central treasury for these entities.

²³ See SFS (1995–2004).

so in 2006 and 2007. Thirdly, in 2009, funding needs decreased due to the proceeds from selling the UBS convertible bond that was obtained by the Confederation in 2008 as part of the recapitalization of UBS.²⁴ Since 2010, the variability in net issuance of bills has again been related to other than structural reasons. It is mainly related to liquidity management, i.e. bridge-funding between the time of large bond redemptions in early 2012, 2013 and 2014, and bond issuing.²⁵ As outlined above, in 2015, the shift in deliverance of taxes by the cantons due to negative interest rates led to high levels of liquidity followed by a general reduction of market funding by the Treasury, and considerable negative net issuance of bills.²⁶

Figures 4a to 4f show that the issuance patterns of bonds, bills and notes differ widely. Even within one category of debt, issued maturities and volumes may differ considerably, as may their standard deviations.²⁷ This also holds true for the frequency of issuances. For bonds, again the grey-shaded areas in Figure 4a mark years of long-term interest rate positioning indicated by SFS. With the exception of the period after the introduction of bills in the early 1990s, evidence from SFS suggests that the issuance of short-term debt seems to be unrelated to interest rate considerations.

Clearly, the issuance of bills shows the most regular and structured pattern in terms of frequency and maturity, i.e. fixed maturities were issued with a regular frequency (see Figure 4c). Although the program was launched in 1979, bills only gained importance in terms of issued volumes in the early 1990s (see Figure 4d or Figure 2). Before this, notes were the preferred debt instrument on the short end of the yield curve. This is why predominantly 3-month bills with a low, stable average volume of around CHF 200 million were issued throughout the 1980s. Given the intention of establishing a Swiss franc money market around 1990, and fostered by the increasing debt levels in the early 1990s, the bill program was expanded by the new issuing of 6-month and 12-month bills. This was accompanied by an increased volume and a greater variability in the size of emissions. From the mid-1990s onwards, the share of bills in marketable debt, and thus the average volume of bills, slowly decreased to approximately CHF 600 to 800 million. However, the variability of volumes issued is still noticeably high, indicating that bill issuances are greatly driven by cash management concerns. Despite introducing longer maturities in the 1990s, the Treasury has kept the focus on the 3-month bill. Around 80% to 90% of the volume of outstanding bills has been issued as 3-month bills throughout the sample period. Consequently, the volume-weighted, yearly issued maturity of bills has only slightly increased since 1990.

Until 1979, short-term government debt was issued in the form of Treasury notes (Figures 4e and 4f). The Treasury concentrated on issuing notes with maturities of between 3 months and 2 years. The volume-weighted, yearly issued maturity of notes reveals that the focus of the Treasury was mostly on 1-year notes. While notes show a relatively regular pattern regarding maturity and frequency throughout the 1970s, there is no predictable pattern regarding the average emission volume. The variability in volumes increases with the issuance of larger volumes from the mid-1970s onwards. With the introduction of bills in 1979, notes lost their role in short-term funding. With the decreasing importance of notes throughout the 1980s and

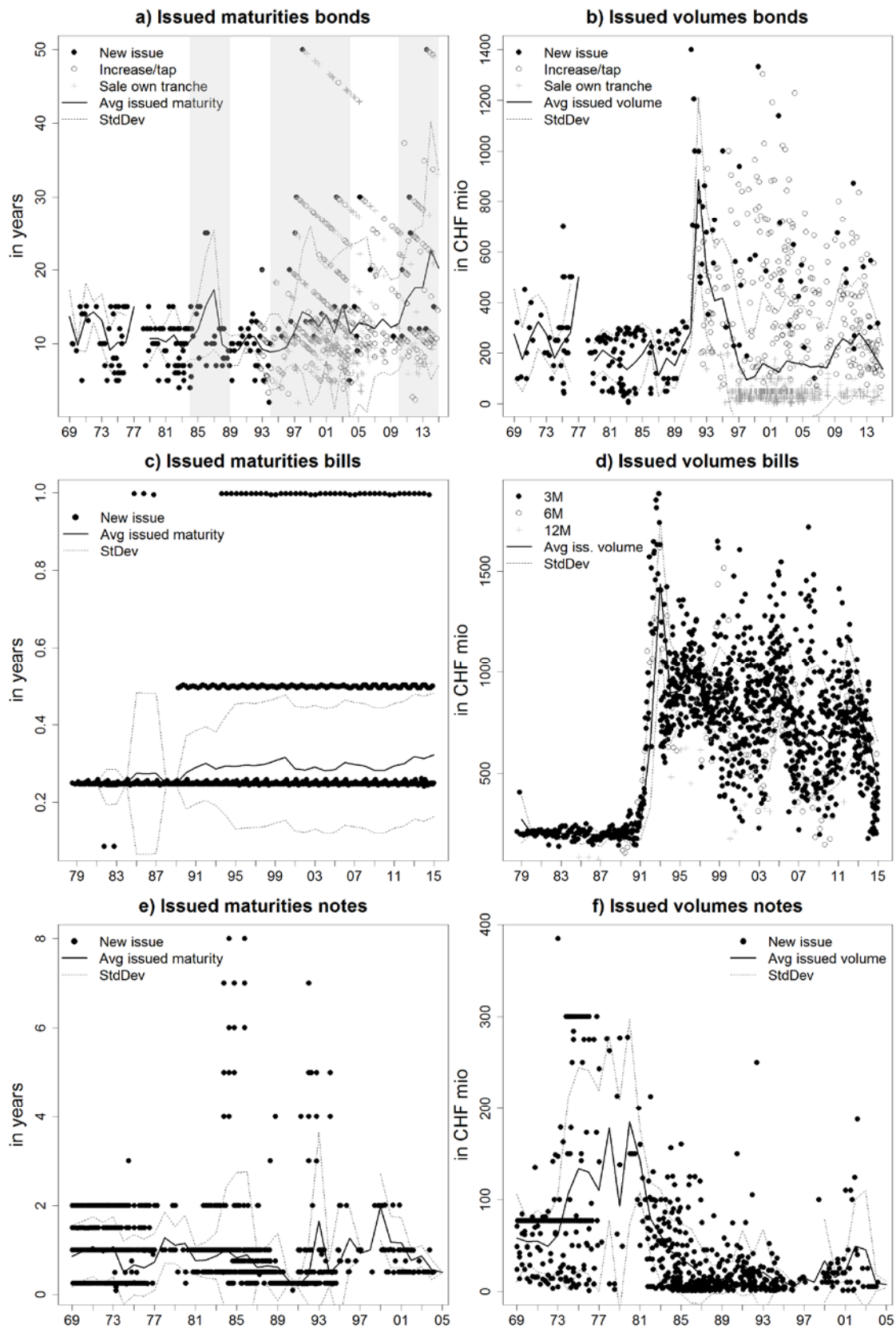
²⁴ The CHF 6 billion capital injection in 2008 was fully covered by already available liquidity.

²⁵ See SFS (2012-2014).

²⁶ See Federal Finance Administration (2016).

²⁷ From 1980 onwards, bonds were issued by tender, i.e. auction. See SFS (2003) and Ranaldo and Rossi (2016).

Figures 4a-f: Issued maturities and amounts of bonds, bills and notes



1990s, the issuance of notes became more dependent on funding needs and demand factors. Discontinuities and demand-driven deviations from the standard maturities and volumes are visible in Figures 4e and 4f.²⁸ The Treasury started to cover a broader range of maturities and the variability of emission volumes increased. However, the Treasury kept a strong focus on three specific maturities (6-month, 12-month and 2-year notes). Although the number of emissions reached its peak in the mid-1980s, with 30–50 emissions per year, the volumes issued were rather low and the average decreased substantially. This and the increasing debt levels lowered the share of notes in total marketable debt to below 1% in the 1990s (Figure 2). Nevertheless, the Confederation ceased to issue notes only in 2005.

Several reasons caused the Treasury to issue notes longer than originally envisioned. First, there was the above mentioned increase in funding needs in the 1990s. Secondly, until 2005 Treasury notes were still demanded by banks, as these could be pledged at the SNB's Lombard facility (a facility similar to the Federal Reserve System's discount window).²⁹ In 2005, the SNB switched to a new facility with the name "liquidity shortage financing facility" (LSFF). Eligible securities for LSFF credits from then on were included in the SNB repo basket that does not contain notes. From 2006 onwards, the old Lombard facility was no longer available. At the same time, the issuance of notes ceased.³⁰

Up to the early 1990s, emissions of bonds (Figures 4a and 4b) were largely driven by funding needs of the Confederation, either due to budget deficits (in the early 1970s) or redeeming debt (throughout the 1980s). Until 1991, with few exceptions (see below), only bonds with a maturity of between 5 and 15 years were issued. The Treasury focused on bonds of 5, 10, 12 and 15 years. All bonds were exclusively issued as new bonds with a volume of around CHF 200 million (i.e. there were no replenishments and no sales of own tranches – see below). This pattern led to a relatively balanced maturity profile throughout these years.

From 1990 until 2005, growing funding needs went along with a higher yearly net issuance of bonds. This was accompanied by a substantial increase in the frequency and the variability of the volume of bond emissions. Additionally, a broader range of maturities was issued. In 1991, in addition to issuing new bonds, the Confederation started to replenish outstanding bonds on a regular basis (i.e. the Treasury increased the outstanding amount of a given bond through new auctions). Replenishments are meant to increase the marketability and liquidity of bond emissions and thus serve to support the Confederation's role in constituting the Swiss franc benchmark curve.³¹ This change in issuance behavior can be visually identified by the "diagonal" patterns in Figure 4a. In 1992, an emission calendar was introduced.³² From 1993 onwards, so-called own tranches³³ of issued bonds were sold directly and ad-hoc to investors, depending on market demand and funding needs. Additionally, call options on own tranches were sold from 1996 to 2002.³⁴

The grey-shaded periods in Figure 4a indicate periods of long-term fixing of interest rates as indicated by the Treasury in the SFS. Two such periods took place in the late 1980s and late

²⁸ See e.g. SFS (1986).

²⁹ In particular, longer-termed notes were demanded by Liechtenstein banks (see e.g. SFS, 1986).

³⁰ See Nellen (2015).

³¹ See SFS (1991) and Federal Treasury (2014).

³² See SFS (1992) and Ranaldo and Rossi (2016) for more details.

³³ To increase its own stocks, the Treasury can itself reserve part of the bond emission. These so-called own tranches can then be sold directly to investors to support market liquidity or to benefit from favorable market conditions. See SFS (1993).

³⁴ The use of interest rate derivatives was made possible already in 1989. The Treasury adapted its debt management toolkit by selling call options on own tranches between 1996 and 2002. Unfortunately, no data on such transactions are available.

1990s. The most recent period started in 2010 and is associated with the period of ultra-low interest rates. When engaging in interest rate fixing, the Treasury issues bonds with longer maturities and increases the volume-weighted yearly issued maturity in comparison to preceding years.³⁵ Particularly at the beginning of these periods, the value-weighted issued maturity increased from the long-standing average and important 10-year benchmark to around 15 years. However, until 1995, most of the bonds issued, along with the larger emissions, were still issued with a maturity of around 10 years. The Treasury started to issue longer-term bonds more regularly only after 1997.³⁶ After 1997, the volume-weighted yearly issued maturity slowly approached 15 years and remained constant at this level until 2010. Thereafter, the ongoing issuance of long-term maturities has ensured increases in the volume-weighted maturity of both issued debt and outstanding marketable debt (see Figure 5).

The period in the late 1980s illustrates that active, long-term interest rate positioning must not necessarily lead to corresponding changes in the value-weighted maturity of outstanding marketable debt, and it may be difficult to empirically capture the Treasury's self-declared, long-term interest rate positioning. Several reasons can be responsible for this. For instance, new long-term issuances might not reach a volume sufficient to move up volume-weighted outstanding debt maturity. Other factors such as an increase in the share of short-term debt (i.e. bills and notes) might also contribute to a decrease in maturity, despite long-term interest rate positioning. Technical factors such as unbalanced maturity profiles may also dampen the effects of long-term issuance.³⁷

The change in strategy in recent years towards more long-term or ultra-long-term bonds is clearly related to the unprecedented low level of interest rates from 2010 onwards. After 2012, almost half of the issued bonds had a maturity of 20 years or longer. Therefore, the volume-weighted yearly issued maturity increased substantially and peaked at 22 years in 2014, when, for the third time in history, a 50-year bond was issued. It has subsequently been replenished intensively.

With regard to issued volumes, the increased frequency of bond emissions seemed to be insufficient to satisfy funding needs from 1993 to 1996. As a consequence, the average emission volume increased substantially. Figure 4b shows that low-size, own tranches were sold with a high frequency from 1996 to 2006. This lowered the average emission size back to its historical average range of between CHF 200 and 300 million. However, from the mid-1990s onwards, emission volumes have varied more strongly compared to before. Figure 4 reveals that the volumes of sold own tranches have been rather low compared to conventional emissions – i.e. auctions of new issues and replenishments. The last two have accounted for most of the issued bond volume.

While it is also on account of the Treasury's stronger demand orientation, the increased frequency and use of different procedures for issuing bonds, and the higher variation in emission volumes, reflect the need to obtain funds by all means between 1993 and 2005. Together with the decrease of total debt from 2006 onwards, the frequency of bond emissions,

³⁵ See all SFS corresponding with the grey-shaded years. Despite the Treasury's claim to have taken advantage of the low interest rate environment (inverse yield curve) in 1988 and 1989, volume-weighted yearly issued maturity dropped back to the historical average of 10 years.

³⁶ After the first 50-year bond was issued in 1903, it took almost a century for the second 50-year bond to be issued in 1999.

³⁷ Different amounts of earlier issued outstanding debt per maturity and/or irregular issuance (regarding distribution of maturity and volume) can lead to a so-called unbalanced maturity profile. If, e.g., relatively high amounts of debt issued in earlier years approach redemption while new issuance is long-term but relatively low in volume, the outstanding maturity of debt can shorten naturally.

the relative importance of own tranche sales, the variation in emission volumes and issued maturities have decreased. From 2010 onwards, bonds with higher volumes came due and the corresponding refunding needs – although marketable debt remained constant – led to a slightly higher emission frequency and average volumes. However, since 2010, bond issuance has followed a more regular pattern, as the variances in volume and maturity have returned to lower levels.³⁸

5. Maturity composition and debt management

The Treasury's responsibility is defined so as to ensure the ability of the Confederation and affiliated institutions to fulfill their payment obligations at all times. The overall objective is to cover the Confederation's funding needs at the lowest possible costs and with an acceptable degree of risk.³⁹ Risks include interest rate risk (the risk of (re)funding debt at higher rates of interest) and roll-over risk (the risk that (re)funding might prove impossible at acceptable conditions).

While debt servicing costs may be lowered by issuing a relatively more short-term debt, this strategy involves increasing interest rate and roll-over risk. Interest rate risk, i.e. fluctuations in interest payable, complicates the Confederation's budgetary management, potentially causing policy uncertainty with regard to the tax level. Furthermore, an unbalanced maturity profile may lead to a higher share of debt maturing when interest rates are high. Risk can therefore be reduced by an acceptable degree of longer-term bonds and an evenly distributed maturity profile. Similarly, roll-over risk increases with a shorter maturity of outstanding debt. Also, the higher the share of debt coming due within the next year, and the more unbalanced the maturity profile of outstanding debt, the more likely will be the realization of roll-over risk. Again, this may be avoided by adjusting debt maturity and maintaining an evenly distributed maturity profile. Thus, tactical interest rate positioning, i.e. issuing more short-term debt or reducing long-term bond issuance when interest rates are high, may come at the cost of higher interest fluctuations due to realized interest rate risk and higher roll-over risks. In contrast, issuing longer-term maturities to reduce interest rate and roll-over risk comes at the cost of having a generally higher interest rate to be paid for longer-term debt.

To manage these trade-offs, the Treasury needs to reflect a broad range of factors such as projected budget deficits or surpluses, redeeming debt, changes in internal funding sources, specific funding needs, and market demand (e.g. liquid benchmark bonds or the ability of the market to absorb new issues of specific maturities). These factors are taken into account to define the frequency and the volume of emissions. The choice of the appropriate debt instrument (e.g. interest rate type, share of short-term debt, etc.), the type of emission (e.g. syndicate or auction) and the maturity, also depend on strategic or tactical considerations (e.g. risk preferences, portfolio targets, liquidity buffers, market conditions).⁴⁰

Obviously, some of these factors are either unobservable, or at least not publicly observable, making the identification of debt management strategies an intricate task.⁴¹ In particular, market

³⁸ In 2014 and 2015, variability in issued maturity was somewhat upwardly biased because of the issuance and replenishments of the 50-year Confederation bond.

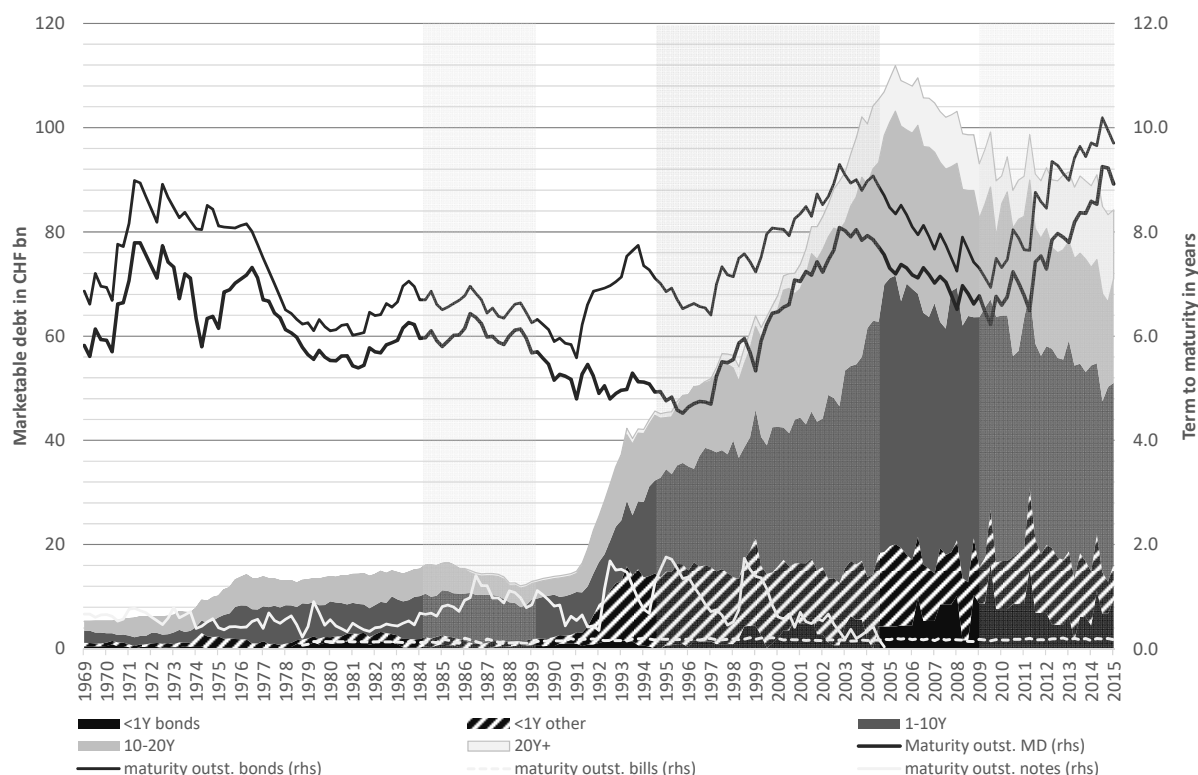
³⁹ See Federal Treasury (2013).

⁴⁰ During the period considered, Switzerland exclusively issued Swiss franc-denominated debt.

⁴¹ For instance, changes in issuance volume, i.e. funding needs, may partially reflect budget deficits or surpluses but they also depend on redeeming debt, changes in internal funding sources, or the liquidity buffer that the Treasury intends to have available. The liquidity buffer again may not only be influenced by liquidity needs, but also by strategic or political decisions.

conditions (e.g. specific investor demand) and the Treasury’s internal reflections and strategies⁴² are not directly observable (or are rarely communicated). We here focus on our new data vintage of emission data to shed some light on the maturity composition and the outstanding maturity chosen by the Treasury.⁴³

Figure 5: Decomposition of marketable debt into selected baskets defined by the remaining maturity (bonds <1Y; other debt <1Y (bills and notes); 1-10Y (bonds and notes); 10-20Y (bonds); >20Y) and volume-weighted maturity of total marketable debt (M^{out}), of bonds ($M^{out,b}$), of notes ($M^{out,notes}$) and of bills ($M^{out,bills}$)



Adjustments in debt management strategies may reflect changing interest rate risks and roll-over risks. We should thus be able to relate changes in the Treasury’s issuance behavior to changes in debt dynamics. As in other literature, we use the debt-to-GDP ratio to reflect debt dynamics. Instead of total debt, we consider the debt management strategy to be related to marketable debt, hence we consider the marketable debt-to-GDP ratio (MD/GDP). While non-marketable debt may influence the emission activity of the Treasury, we provide evidence in the following section that non-marketable debt does not strongly influence the maturity choice. Regarding interest rate positioning, the Treasury might respond to the level of interest rates as measured by the short-term interest rate (3-month Libor, y^{3m}) and the slope of the yield curve (10-year yield minus 3-month Libor, $y^{10y}-y^{3m}$).

The remaining maturity composition of outstanding marketable debt and the value-weighted maturity by instruments are depicted in Figure 5 as percentages that certain baskets of maturities

⁴² Such as benchmark portfolios, duration targets, interest rate risk and roll-over risk considerations, liquidity buffer targets or the use of interest rate swaps to steer duration or interest rate positioning.

⁴³ Besides the value-weighted maturity of outstanding debt, maturity profiles also illustrate risk exposure and market coverage of the yield curve.

contribute to total debt, where the share of debt of a certain maturity basket is defined as the sum of debt in this basket divided by the sum of total marketable debt. Figure 5 puts the maturity composition into perspective with the volume-weighted maturities of total debt (M^{out}) and individual debt instruments $M^{\text{out},b}$ (where b stand for bonds), $M^{\text{out},\text{notes}}$ and $M^{\text{out},\text{bills}}$.⁴⁴ The periods when the SFS clearly points to long-term interest rate fixing are again shaded in grey.

Two major insights emerge from Figure 5. First, the volume-weighted maturity of total outstanding marketable debt (M^{out}) is largely driven by the volume-weighted maturity of outstanding bonds ($M^{\text{out},b}$). Secondly, the volume-weighted maturity of notes ($M^{\text{out},\text{notes}}$) and bills ($M^{\text{out},\text{bills}}$) seems not to be relevant for M^{out} . It is thus interesting to focus on the difference between $M^{\text{out},b}$ and M^{out} . Indeed, the difference between $M^{\text{out},b}$ and M^{out} becomes larger, the larger the share of debt with a maturity lower than one year. Thus M^{out} is largely defined by $M^{\text{out},b}$ and the amount of debt with a maturity lower than one year.

Figure 6: M^{out} , $M^{\text{out},b}$ and SSTD



For instance, during the mid-1990s, M^{out} temporarily decoupled from $M^{\text{out},b}$. This temporary change in relationship was related to the increasing use of bills (see Figure 2) together with the stable average maturity of bond emissions (see Figure 4a). With a declining share of bills and notes in the late 1990s, M^{out} was again largely influenced by the value-weighted maturity of bonds. Throughout recent years, the share of bills remained relatively constant at between 10% and 15% of marketable debt, and did not decisively affect the maturity of the outstanding debt

⁴⁴ Value-weighted maturities are computed based on the maturities at issuance of respective issues and not on effective maturities of callable bonds. Appendix A shows that potential distortions from using issued maturities are rather small and, more importantly, do not affect our analysis (i.e. both maturity measures are strongly correlated).

portfolio. Instead, the emission of long-term bonds and ultra-long-term bonds has affected $M^{out,b}$ and consequently M^{out} .

Figures 7a-f: $M^{out,b}$ and SSTD against MD/GDP, i^{3m} , $i^{10y} - i^{3m}$

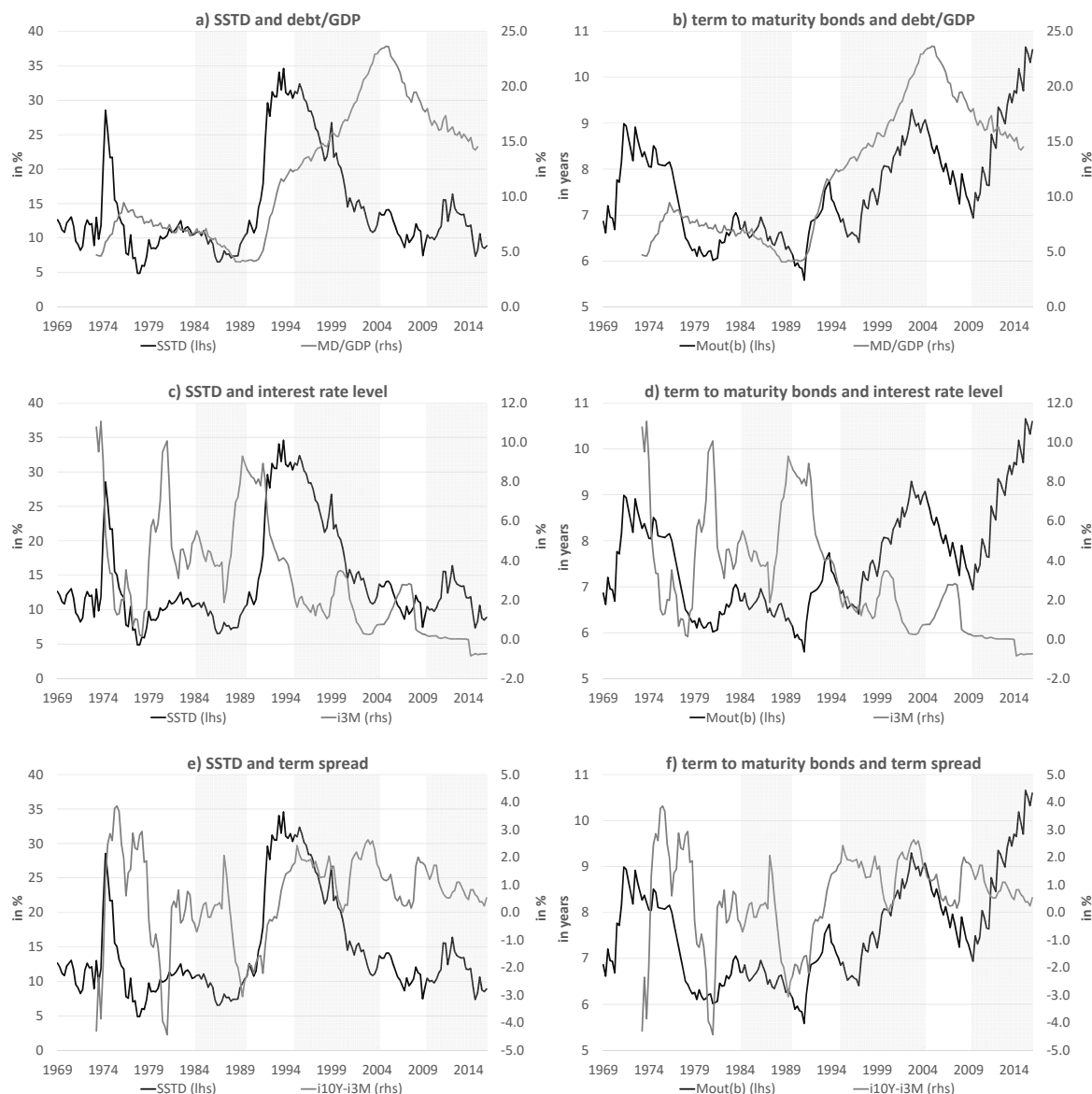


Figure 5 also illustrates that, for instance, the decoupling in the 1990s was not due to maturing bonds (i.e. bonds with a maturity lower than one year). Instead, it was related to the increasing use of bills that by definition had a maturity lower than one year. We can thus define a variable that may be better able to capture a debt-management change in relation to short-term debt. The share of short-term debt (SSTD) denotes debt issued with a maturity lower than one year, and consequently captures only bills and notes with a maturity lower than one year. These instruments can be easily and actively managed in response to policy changes. In contrast, bonds with a maturity lower than one year are a mere echo of past emissions and do not reflect current policy considerations.

Figure 6 clearly shows that M^{out} is largely defined by $M^{\text{out,b}}$ and SSTD. Thus, to capture changes in the debt management strategy in response to MD/GDP and the interest rate environment, we focus on these two variables.⁴⁵

Figures 7a-f depict the two policy variables against MD/GDP, the short-term rate (i^{3m}) and the term spread ($i^{10y} - i^{3m}$). Again, grey-shaded areas indicate periods of long-term interest rate fixing as declared in SFS. Figure 7a shows no clear relation between SSTD and MD/GDP. However, sharp increases in MD/GDP seem to trigger an initial increase in SSTD followed by a decrease in SSTD (such as in the early 1990s). This indicates that increases in the debt level are initially accommodated by increases in SSTD that are later on replaced by bond emissions. Figure 7b indicates that increases in MD/GDP correspond with funding through bonds with longer maturities. The Treasury thus seems to increase the maturity of issued bonds in response to increasing roll-over risk and interest rate risk due to increasing debt levels, but generally refrains from lowering SSTD.

Figure 7c does not reveal a clear relationship between SSTD and the short-term rate. The Treasury generally seems to abstain from interest rate positioning via SSTD. Figure 7d suggests a weak negative correlation between the $M^{\text{out,b}}$ and the short-term rate, if at all and only for the last decade – i.e., the Treasury issues bonds with relatively longer maturities when the interest rate level is low. A similar picture is revealed by Figures 7e and 7f. While SSTD seems not to respond to the term spread, there seems to be only a slightly negative relation between $M^{\text{out,b}}$ and the term spread in the last 10 years. Long-term interest fixing as declared in SFS is reflected by increasing $M^{\text{out,b}}$ in the latter two periods. The increase in bond issuance starting in the mid-1990s also coincides with a decrease in SSTD during this period.

6. Econometric analysis

In this section, we validate descriptive and qualitative findings econometrically. We first analyze the long-run relationship between MD/GDP and $M^{\text{out,b}}$, i.e. we analyze the relationship in levels. Once we have identified the long-run effects, we focus on the short-run effect of MD/GDP on $M^{\text{out,b}}$ and on SSTD, i.e. we analyze the relationship in differences.⁴⁶ We further analyze whether the Treasury considers non-marketable debt (TD-MD) in determining $M^{\text{out,b}}$ and SSTD, i.e. we analyze whether total debt plays a role in the Treasury's marketable debt management. Finally, we consider the interest rate environment, taking into account periods of interest positioning as indicated by the Treasury in the yearly SFS.

Table 2 displays descriptive statistics of the variables used in this section. The table is based on quarterly and yearly data during the observation period ranging from 1970 to 2016.

⁴⁵ This can further be motivated mathematically. $M^{\text{out}} = \text{SSTD} * M^{\text{out,STD}} + (1 - \text{SSTD}) * M^{\text{out,b}}$, where $M^{\text{out,STD}}$ denotes outstanding maturity of short-term debt. As shown in Figure 5, $M^{\text{out,STD}}$ is likely to be rather constant. The maturity of outstanding bills tends to be constant, whereas the varying maturity of outstanding notes is related to notes with a maturity greater than one year. Hence M^{out} is almost entirely defined by SSTD and $M^{\text{out,b}}$.

⁴⁶ While it would be interesting to analyze issued maturities, the Treasury did not issue any bonds in many quarters (and for two years). We therefore abstain from analyzing issued maturities.

Table 2: Descriptive statistics

	unit	mean	median	max	min	standard deviation	skewness	observations
MD	mn CHF	45388.82	26219.10	111072.75	5268.64	37001.82	0.46	184
TD	mn CHF	68974.18	67513.00	130000.00	8606.00	42678.80	0.01	45
M^{out}	days	2107.99	2009.13	3384.31	1279.26	496.20	0.46	184
MD^b	mn CHF	38491.03	18964.05	97436.65	4383.00	32544.72	0.59	184
$M^{out,b}$	days	2471.93	2495.33	3677.22	1458.50	546.14	0.16	184
SSTD	%	13.19	10.72	32.40	3.89	7.65	1.20	184
Libor 3M	%	3.11	2.46	11.06	-0.79	2.81	0.90	168
Slope 10Y-3M	pp	0.58	0.76	3.86	-4.43	1.60	-0.91	168
MD/GDP	%	10.35	8.11	21.12	3.76	5.32	0.42	184
(TD-MD)/GDP	%	0.06	0.07	0.13	0.02	0.03	0.13	45
Δ MD	mn CHF	427.95	210.42	4802.25	-7195.65	1607.51	-0.82	183
Δ TD	mn CHF	2144.53	1177.00	15000.00	-11000.00	5117.75	0.24	45
ΔM^{out}	days	7.52	1.99	276.49	-234.40	72.49	0.30	183
ΔMD^b	mn CHF	397.90	227.83	3601.02	-4810.22	1271.67	-0.94	183
$\Delta M^{out,b}$	days	7.14	-7.56	273.98	-92.00	73.64	0.91	183
Δ SSTD	pp	0.02	-0.12	9.68	-6.66	1.63	1.12	183
Δ Libor 3M	pp	-0.07	-0.03	2.49	-3.69	0.79	-0.67	167
Δ Slope 10Y-3M	pp	0.03	-0.00	3.22	-2.16	0.67	1.06	167
Δ MD/GDP	pp	0.04	-0.01	1.01	-1.26	0.35	-0.12	183
Δ (TD-MD)/GDP	pp	0.00	0.00	0.03	-0.03	0.01	-0.27	45

To analyze the long-run relationship between $M^{out,b}$ and MD/GDP, we focus on the period between 1980 and 2008. During this period, the relationship between the two variables was relatively stable (see Figure 7b), was probably less influenced by other effects (for instance the ultra-low interest rates at the end of the sample or a lack of bond emissions such as at the end of the 1970s), and was econometrically well behaved (for the stationary error terms of the regression, see below). We therefore take this period as a benchmark. The results of the following regression are reported in Table 3.

$$(1) \quad M_t^{out,b} = \alpha + \beta_1 MD/GDP_t + \varepsilon_t$$

Table 3: Long-run effects on $M^{out,b}$, quarterly frequency

	Maturity of Bonds (1980 – 2008)
constant	1300.84*** (24.84)
MD/GDP	95.83*** (2.37)
Adjusted R ²	0.94
Durbin Watson	0.25
Observations	116

This table reports regressions of $M^{out,b}$. The dataset contains quarterly observations for each variable during the observation period ranging from 1980 to 2008. ***, ** and * denote statistical significance (two-tailed) at the 1%, 5%, and 10% significance level, respectively. As error terms are serially correlated, we employ Newey-West standard errors.

Table 3 shows that – in the long-run – the Treasury increases $M^{out,b}$ by roughly 100 days in response to an MD/GDP increase of 1%. This is well illustrated in Figure 7b; the Treasury increases $M^{out,b}$ by roughly one year if MD/GDP increases by 3% to 4%. In other words, the Treasury manages roll-over risk by increasing the maturity of outstanding bonds. While the

results for the full sample ranging from 1970 to 2016 are similar but different in magnitude, the error term is no longer stationary. However, we presume that the underlying long-run effect remains valid but is overlain by other factors that influence bond maturity, such as the period of low interest rates after 2008 and a prolonged phase without bond emissions.

Having gained a benchmark for the long-run effect of MD/GDP, we focus on short-run effects using specifications in first differences. We start with a yearly frequency, as this allows us to control for non-marketable debt. We consider the following two regressions for $M^{out,b}$ (2) and SSTD (3):

$$(2) \quad \Delta M_t^{out,b} = \alpha + \beta_1 \Delta(TD - MD)/GDP_t + \beta_2 \Delta MD/GDP_t + \beta_3 \Delta M_{t-1}^{out,b} + \varepsilon_t$$

Table 4: Short-run effects on $M^{out,b}$, yearly frequency

	(1)	(2)	(3)	(4)	(5)	(6)	(7)	(8)
constant	0.49 (23.16)	-4.08 (16.8)	34.4 (34.02)	20.49 (27.04)	9.51 (19.37)	21.36 (33.18)	31.69 (32.93)	14.7 (20.47)
$\Delta(TD-MD)/GDP$	14.52 (21.88)		-0.47 (16.17)		17.37 (18.05)		-9.48 (19.65)	
$\Delta MD/GDP$	99.99*** (33.12)	103.1*** (12.8)			38.9* (22)	64.81** (25.29)		
$\Delta M^{out,b} (t-1)$	0.03 (0.29)			0.46** (0.2)	0.46*** (0.17)			0.52*** (0.14)
Adjusted R ²	0.43	0.47	-0.04	0.18	0.28	0.13	-0.02	0.25
Durbin Watson	1.75	1.73	1.05	1.71	1.73	0.97	0.96	1.78
Observations	27	28	28	27	45	46	46	45

This table reports regressions of $\Delta M^{out,b}$. Column 1 displays the baseline regression analysis, whereas columns 2 – 8 display specific robustness checks. Column 1 – 4 is based on yearly observations from 1980 to 2008 and column 5 – 8 from 1970 to 2016. ***, ** and * denote statistical significance (two-tailed) at the 1%, 5%, and 10% significance level respectively. For columns 1, 4, 5 and 8, heteroscedasticity-consistent (Huber-White) standard errors are in parentheses. Columns 2, 3, 6 and 7 uses Newey-West standard errors.

Table 4, column 1, displays the baseline regression and robustness checks (columns 1–8). The baseline regression uses the same subsample as used for Table 3, i.e. 1980 to 2008. Unsurprisingly, the baseline regression also shows an impact of roughly 100 days if MD/GDP increases by 1% within one year. As the same but lagged variable in column 1 is not significant, the Treasury seems to increase $M^{out,b}$ within one year. Column 2 shows that the result remains robust in case only the variable MD/GDP is used. While the magnitude and the significance of the coefficients change, the economic results remain robust if assessed against the full sample.⁴⁷ The second main result of this table is that the share of non-marketable debt ((TD-MD)/GDP) has no impact on $M^{out,b}$.

Next we analyze if marketable (MD/GDP) and non-marketable debt to GDP ((TD-MD)/GDP) influence the Treasury's cash management. Hence, we run the same regression as before, now with SSTD as a dependent variable.

⁴⁷ Note that by excluding MD/GDP, as done in column 4, the lagged dependent variable captures autocorrelation of MD/GDP. Furthermore, column 6 shows a misleadingly low impact of MD/GDP on $M^{out,b}$ for the full sample. This is due to other effects lowering $M^{out,b}$ such as the ultra-low interest rates at the end of the observation period. As these other effects are strongly autocorrelated, column 5 reports a misleadingly low impact of MD/GDP on $M^{out,b}$ in combination with a significantly autocorrelated dependent variable. See also Table 6 for further analysis of the overall observation period.

$$(3) \quad \Delta SSTD_t = \alpha + \beta_1 \Delta(TD - MD)/GDP_t + \beta_2 \Delta MD/GDP_t + \beta_3 \Delta SSTD_{t-1} + \varepsilon_t$$

Table 5 shows that no significant effects for MD/GDP nor (TD-MD)/GDP can be identified with a yearly frequency. This results is plausible, as SSTD is an indicator for the Treasury's cash management, which is used for rather short-term financing.⁴⁸

Table 5: Short-run effects on SSTD, yearly frequency

	(1)	(2)	(3)	(4)	(5)	(6)	(7)	(8)
constant	-0.21 (0.46)	-0.21 (0.68)	0.22 (0.85)	-0.04 (0.51)	-0.11 (0.37)	-0.09 (0.5)	0.04 (0.56)	0.01 (0.44)
$\Delta(TD-MD)/GDP$	0.44 (0.48)		0.56 (0.35)		0.4 (0.44)		0.34 (0.31)	
$\Delta MD/GDP$	0.68 (0.49)	1.04 (0.9)			0.76 (0.55)	0.91 (0.76)		
$\Delta SSTD(t-1)$	0.45** (0.16)			0.53** (0.19)	0.2 (0.18)			0.29 (0.21)
Adjusted R ²	0.27	0.08	0.01	0.26	0.08	0.06	-0.01	0.06
Durbin Watson	1.75	0.82	1.03	1.87	1.93	1.4	1.49	2.04
Observations	27	28	28	27	45	46	46	45

This table reports regressions of $\Delta SSTD$ with the same structure as Table 4. Column 1 displays the baseline regression analysis, whereas columns 2 – 8 display specific robustness checks. Column 1 – 4 is based on yearly observations from 1980 to 2008 and column 5 – 8 from 1970 to 2016. ***, ** and * denote statistical significance (two-tailed) at the 1%, 5%, and 10% significance level respectively. For columns 1, 4, 5 and 8, heteroscedasticity-consistent (Huber-White) standard errors are in parentheses. Columns 2, 3, 6 and 7 uses Newey-West standard errors.

Thus, non-marketable debt seems to influence neither bond nor short-term debt issuance. Consequently, we focus further analysis on marketable debt. This further allows us to switch to a quarterly frequency.

In so doing, we put the focus on the interest rate environment and the Treasury's respective assessment. The latter is analyzed by adding three dummy variables D_n that take the value of one for self-declared periods of interest rate positioning ($D_1=1$ from 1985 to 1989 and 0 otherwise; $D_2=1$ from 1995 to 2004 and 0 otherwise; $D_3=1$ from 2010 to 2016 and 0 otherwise). We run the following regression for $M^{out,b}$ and report the results in Table 6.

$$(4) \quad \Delta M_t^{out,b} = \alpha + \sum_{n=1}^3 \beta_n D_n + \beta_4 \Delta \left(\frac{MD}{GDP} \right)_{t-1} + \beta_5 \Delta M_{t-1}^{out,b} + \varepsilon_t$$

We interpret the results in Table 6 as follows: The Treasury reacts with a lag of one quarter to increases in MD/GDP, i.e. it adjusts $M^{out,b}$ in the following quarter rather than in the current or later quarters within the one-year horizon identified before. Columns 3 and 5 show that MD/GDP has a significant effect neither in the current quarter nor in the quarter with a lag of two. Interestingly, the relevant coefficients in almost all specifications are close to the long-term effect reported in Table 3; i.e. the Treasury adjusts maturity in response to changes in MD/GDP mostly within the following quarter.

The Treasury seems to consider the interest rate environment in an economically significant way. However, the Treasury seems not to do so in a two-sided way. Column 7 supports this view, as both the level and the slope of the yield curve show statistically insignificant values if used as the only explanatory variables. While both variables turn out to be statistically

⁴⁸ Note that an effect can be found by using quarterly frequency, as reported in table 7. However, the effect seems to be zero for lower frequency.

significant if used in combination with the relevant lagged MD/GDP variable (column 6), the economic effect is less pronounced (it would need a decrease in the interest rate level of 7% or a slope decrease of 4% to cause the Treasury to increase $M^{out,b}$ to a similar extent as in response to a 1% increase of MD/GDP).

While dummies that account for the interest rate fixing periods 85–89 and 95–04 remain statistically and economically insignificant, the dummy 10–16 is both economically and statistically highly significant (columns 1, 2 and 9). Despite decreasing MD/GDP between 2010 and 2016, the Treasury increased $M^{out,b}$ by approximately 3.5 years or approximately 45 days per quarter. Taking into account the decreasing MD/GDP of approximately 2.5% during the same period, the estimated coefficients match the data rather well.

Table 6: Short-run effects on $M^{out,b}$, quarterly frequency

	(1)	(2)	(3)	(4)	(5)	(6)	(7)	(8)	(9)
constant	-5.49 (6.56)	-5.31 (6.88)	6.57 (5.25)	3.58 (4.85)	5.05 (5.26)	54.08*** (15.6)	21.95 (18.4)	4.94 (5.29)	14.54 (23.48)
Libor 3M						-13.31*** (3.71)	-4.41 (4.25)		-5.34 (5.22)
Slope 10Y-3M						-23.39*** (6.17)	-6.55 (6.72)	0.02 (2.81)	-13.54* (7.43)
dummy 85-89	4.89 (11.31)	1.08 (11.92)							8.55 (10.53)
dummy 95-04	0.2 (13.34)	5.22 (13.67)							6.25 (14.22)
dummy 10-16	52.02*** (15.51)	58.59*** (15.94)							44.11** (20.73)
Δ MD/GDP			-24.86 (19.04)						
Δ MD/GDP (t-1)	90.32*** (14.85)	86.25*** (14.71)		74.96*** (13.2)		102.96*** (14.74)			104.97*** (15.17)
Δ MD/GDP (t-2)					25.73 (19.53)				
Δ SSTD									-3.56 (2.88)
$\Delta M^{out,b}$ (t-1)	0.22*** (0.07)		0.25*** (0.09)	0.25*** (0.07)	0.18** (0.08)	0.25*** (0.07)	0.23** (0.09)	0.24*** (0.09)	0.23*** (0.07)
Adjusted R ²	0.21	0.17	0.05	0.17	0.05	0.27	0.05	0.05	0.28
Durbin Watson	1.88	1.55	1.87	1.85	1.94	1.9	1.98	1.99	1.91
Observations	188	188	188	188	187	174	174	174	174

This table reports regressions of $\Delta M^{out,b}$. Column 1 displays the baseline regression analysis, whereas columns 2–9 display specific robustness checks. The dataset contains quarterly observations for each variable during the observation period ranging from 1970 to 2016. ***, ** and * denote statistical significance (two-tailed) at the 1%, 5%, and 10% significance level respectively. For columns 1 and 3–9, heteroscedasticity-consistent (Huber-White) standard errors are in parentheses. Column 2 uses Newey-West standard errors.

Interestingly, including the dummies leaves the interest rate level statistically insignificant, whereas the coefficient for the interest rate slope remains weakly statistically significant but decreases by almost half (column 9). The Treasury thus seems to apply a rather one-sided strategy when engaging in interest rate positioning. It engages in interest rate positioning when considering the interest rate environment to be favorable, i.e. it goes long if the interest rate environment is favorable, but it does not go short if the interest rate environment is unfavorable.

This one-sided strategy has been particularly pronounced in the recent ultra-low and negative interest rate environment since 2010.

The insignificance of the other two dummies for self-declared periods of interest rate positioning may wrongly lead to the conclusion that the Treasury did not effectively engage in interest rate positioning during these two phases. As outlined in section 4, the maturity of marketable debt is subject to substantial inertia and is further affected by technical factors. These issues make it difficult to empirically capture long-term interest rate positioning. While the first period is characterized by low emission volumes, the second period is characterized by the maturing long-term bonds that have built up with the increasing debt levels since the early 1990s. We thus refrain from making such a conclusion.

Running a similar regression with SSTD as the dependent variable for a quarterly frequency strengthens the findings above. In particular, the Treasury currently finances an increase in MD/GDP with short-term debt, and subsequently increases the volume of bonds. Current changes in MD/GDP display a statistically and economically significant increase of 2% or more in SSTD. Past changes of MD/GDP display a negative sign (while not statistically significant in columns 2 and 5). This is in line with the finding above that the Treasury changes $M^{out,b}$ in the subsequent quarter in response to changes in MD/GDP. As a consequence, changes in MD/GDP are mostly absorbed by current changes in SSTD.

Table 7: Short-run effects on SSTD, quarterly frequency

	(1)	(2)	(3)	(4)	(5)
constant	-0.05 (0.1)	-0.07 (0.11)	0.18 (0.18)	0.15 (0.39)	0.26 (0.75)
Libor 3M				-0.03 (0.11)	-0.02 (0.19)
Slope 10Y-3M				-0.25 (0.21)	-0.18 (0.33)
dummy 85-89			-0.29 (0.3)		-0.06 (0.28)
dummy 95-04			-0.53** (0.24)		-0.78** (0.3)
dummy 10-16			-0.35 (0.33)		-0.02 (0.56)
Δ MD/GDP	2.04*** (0.4)	2*** (0.44)		2.14*** (0.37)	2.39*** (0.36)
Δ MD/GDP (t-1)	-0.91** (0.37)	-0.34 (0.34)		-0.67* (0.39)	-0.57 (0.41)
$\Delta M^{out,b}$					0 (0)
Δ SSTD (t-1)	0.3*** (0.11)		0.27** (0.11)	0.25** (0.11)	0.21* (0.11)
Adjusted R ²	0.22	0.15	0.08	0.25	0.26
Durbin Watson	1.88	1.42	1.82	1.86	1.84
Observations	188	188	188	174	174

This table reports regressions of Δ SSTD. Column 1 displays the baseline regression analysis, whereas columns 2–5 display specific robustness checks. The dataset contains quarterly observations for each variable during the observation period ranging from 1970 to 2016. ***, ** and * denote statistical significance (two-tailed) at the 1%, 5%, and 10% significance level respectively. For columns 1 and 3–5, heteroscedasticity-consistent (Huber-White) standard errors are in parentheses. Column 2 uses Newey-West standard errors.

The Treasury seems not to consider the interest rate environment when determining the SSTD. Neither the level nor the slope coefficients are statistically significant in any of the specifications. With the exception of the dummy 95–04, dummies remain insignificant too. The reason for the former dummy’s significance is related to the markedly increased funding needs that were mainly covered by increased long-term (bond) issuance in this period. Consequently, this led to a decreasing SSTD. The Treasury thus engages in asymmetric and one-sided interest rate positioning. It engages in interest rate positioning only by means of changes in $M^{\text{out},b}$, but does not actively use SSTD to change debt maturity (asymmetric). It does so on a one-sided basis, i.e. it engages in interest rate positioning only when it considers the interest rate environment to be favorable to go long, but it does not actively go short.

In the specifications for $M^{\text{out},b}$ and SSTD, we control for current changes of the other variable in the last column. Both variables are independent from each other over the whole sample. As argued in previous sections, SSTD is likely to be used as a liquidity management instrument. If so, it would not come as a surprise that SSTD is not used as a strategic debt management instrument. Indeed, the econometric section confirms this qualitative finding, as no decisive evidence is found for any role of SSTD in relation to roll-over risk and interest rate positioning.

7. Conclusion

This paper presents a new set of data on emissions of marketable Swiss federal government debt from 1970 onwards, together with data on total outstanding debt and its composition from the Confederation’s yearly balance sheet. The data vintages are used to analyze Swiss government debt composition, to differentiate marketable and non-marketable debt, to analyze the Confederation’s issuing behavior, to calculate marketable debt maturity and marketable debt-to-GDP ratios, and to analyze the Treasury’s debt management.

Marketable debt is not the only form of debt the Confederation uses to finance itself. The Confederation’s debt composition shows a non-negligible share of non-marketable debt. This share has reduced over time with increasing debt levels and changes in the organization of government-related institutions. Economically and empirically, however, non-marketable debt is not found to influence the Treasury’s marketable debt management.

The Confederation’s emission management strategy shows distinctive changes during the period considered. Until the early 1990s, the Treasury issued bonds with maturities of between 5 and 15 years on a when-needed basis. The increasing debt levels from the early 1990s onwards changed this pattern. The introduction of replenishments, sales of own tranches and an emission calendar went in tandem with the Treasury becoming more regular and predictable. Overall, increasing debt levels resulted in a demand-driven emission management strategy.

The Confederation’s debt management is in line with international practices. In particular, the Confederation increases the outstanding maturity of debt in response to an increasing marketable debt level and the corresponding increase of interest rate risk and roll-over risk. Additionally, the Confederation seeks to actively minimize the interest rate burden. The approach taken is asymmetric in that it focuses on the maturity of bonds only, i.e. the share of short-term debt as a potential instrument to change the maturity of debt is rather mute. Furthermore, the approach is one-sided in that the Treasury tries to minimize the interest rate burden for a longer-term horizon only, i.e. it increases bond maturity when the interest rate environment is favorable, but it does not actively reduce bond maturity when the interest rate

environment is unfavorable. In other words, the Treasury engages in long-term interest rate fixing.

References

- Aiyagari, Rao S., Albert Marcet, Thomas J. Sargent and Juha Seppälä (2002), “Optimal taxation without state contingent debt”, *Journal of Political Economy* 110, 1220–1254.
- Angeletos, George-Marios (2002), “Fiscal Policy with Non-Contingent Debt and the Optimal Maturity Structure”, *Quarterly Journal of Economics* 117 (2), 1105–1131.
- Barro, Robert J. (1979), “On the Determination of the Public Debt”, *Journal of Political Economy* 87, 940–71.
- Beljean, Tobias and Alain Geier (2013), “The Swiss Debt Brake – Has It Been a Success?”, *Swiss Journal of Economics and Statistics* 149 (2), 115–135.
- Bodmer, Frank (2006), “The Swiss Debt Brake: How it Works and What Can Go Wrong”, *Swiss Journal of Economics and Statistics (SJES)*, Swiss Society of Economics and Statistics (SSES) 142 (III), 307–330.
- Bohn, Henning (1990), “Tax smoothing with financial instruments”, *American Economic Review* 80, 1217–30.
- Bruchez, Pierre-Alain (2003), “Will the Swiss Fiscal Rule Lead to Stabilization of the Public Debt?”, Swiss Federal Finance Administration Working Paper 4.
- Colombier, Carsten (2004), “Eine Neubewertung der Schuldenbremse”, Swiss Federal Finance Administration Working Paper 2.
- Colombier, Carsten and Andres Frick (2001), “Ueberlegungen zur Schuldenbremse”, KOF, Zurich.
- Culbertson, J. (1957), “The Term Structure of Interest Rates”, *Quarterly Journal of Economics* 71, 485–517.
- Danninger, Stephan (2002), “A new rule: ‘The Swiss debt brake’”, IMF Working Paper 02/18.
- Debrun, Xavier, Natan P. Epstein, and Steven A. Symansky (2008), “A New Fiscal Rule: Should Israel Go Swiss?”, IMF Working Paper 08/87.
- Favero, Carlo, Alessandro Missale and Gustavo Piga (1999), “EMU and Public Debt Management: One Money, One Debt?”, CEPR, Policy Paper 3.
- Federal Finance Administration (various years), “Federal Treasury Activity Report”, Federal Finance Administration.
- Feld, Lars P. and Gebhard Kirchgässner (2006), “On the Effectiveness of Debt Brakes: The Swiss Experience”, CREMA Working Paper Series 2006–21, Center for Research in Economics, Management and the Arts (CREMA).
- Garbade, Kenneth D. (2004), “The Institutionalization of Treasury Note and Bond Auctions, 1970–75”, *Federal Reserve Bank of New York Economic Policy Review* 10 (1), 29–45.

- Garbade, Kenneth D. and Jeffrey Ingber (2005), “The Treasury Auction Process: Objectives, Structure, and Recent Adaptations”, Federal Reserve Bank of New York Current Issues in Economics and Finance 11 (2), 1–11.
- Garbade, Kenneth D. (2007), “The emergence of ‘regular and predictable’ as a treasury debt management strategy”, Federal Reserve Bank of New York Economic Policy Review 13 (1), 53–71.
- Garbade, Kenneth D. and Matthew Rutherford (2007), “Buybacks in Treasury Cash and Debt Management”, Federal Reserve Bank of New York Staff Report 304.
- Garbade, Kenneth D. (2008), “Why the U.S. Treasury Began Auctioning Treasury Bills in 1920”, Federal Reserve Bank of New York Economic Policy Review 14.
- Geier, Alain (2011a), “Die Schuldenbremse des Bundes: Hintergründe und Wirkungen”, PhD thesis, University of Neuchâtel.
- Geier, Alain (2011b), “The Debt brake – the Swiss fiscal rule at the federal level”, Swiss Federal Finance Administration Working Paper 15.
- Geier, Alain and Frank Bodmer (2003), “Application of a Fiscal Rule: The Swiss Debt Brake”, mimeo, University of Basel.
- Greenwood, Robert and Dimitri Vayanos (2014), “Bond supply and excess bond returns”, Review of Financial Studies 27 (3), 663–713.
- Greenwood, Robin, Samuel G. Hanson and Jeremy C. Stein (2015), “A comparative-advantage approach to government debt maturity”, Journal of Finance LXX (4), 1683–1722.
- Greenwood, Robin, Samuel G. Hanson, Joshua S. Rudolph, and Lawrence Summers (2014), “Government Debt Management at the Zero Lower Bound”, Hutchins Center Working Paper 5.
- Guibaud, Stéphane, Yves Nosbusch and Dimitri Vayanos (2013), “Bond market clienteles, the yield curve and the optimal maturity structure of government debt”, Review of Financial Studies 26 (8), 1913–1961.
- Haan, Jakob de and Guido Wolswijk (2005), “Government debt management in the euro area - recent theoretical developments and changes in practices”, European Central Bank, Occasional Paper Series 25.
- Himmel, Margit and Alain Geier (2004), “Erste Erfahrungen mit der Umsetzung der Schuldenbremse“, Die Volkswirtschaft 2, 5–11.
- International Monetary Fund (2014), “Revised guidelines for public debt management”, <https://www.imf.org/external/np/pp/eng/2014/040114.pdf>.
- Kirchgässner, Gebhard (2013), “Fiscal Institutions at the Cantonal Level in Switzerland”, Swiss Journal of Economics and Statistics 149 (2), 139–166.

Krishnamurthy, Arvind and Annette Vissing-Jorgensen (2011), “The effects of quantitative easing on interest rates: channels and implications for policy”, *Brooking Papers on Economic Activity*, Fall 2011.

Krishnamurthy, Arvind and Annette Vissing-Jorgensen (2012), “The aggregate demand for treasury debt”, *Journal of Political Economy* 120 (2), 233–267.

Krishnamurthy, Arvind and Annette Vissing-Jorgensen (2015), “The impact of Treasury supply on financial sector lending and stability”, *Journal of Financial Economics* 118, 571–600.

Lucas, Robert E. Jr. and Nancy L. Stokey (1983), “Optimal fiscal and monetary policy in an economy without capital”, *Journal of Monetary Economics* 12, 55–93.

Marti Locher, Fabienne (2015), “Ausgestaltung und Wirksamkeit der kantonalen Schuldenbremsen in der Schweiz: Eine ökonomische und juristische Analyse”, PhD thesis, University of Bern.

Missale, Alessandro (1999), “Public debt management”, Oxford, Oxford University Press.

Modigliani, Franco, and Richard Sutch (1966), “Innovations in Interest Rate Policy”, *AER Papers and Proc.* 56, 178–97.

Nellen, Thomas (2015), “Collateralised liquidity, two-part tariff and settlement coordination”, Swiss National Bank, Working Paper 2015–13.

Nosbusch, Yves (2008), “Interest cost and the optimal maturity structure of government debt”, *The Economic Journal* 118, 477–498.

Ranaldo, Angelo and Enzo Rossi (2016), “Uniform-price auctions for Swiss government bonds: Origin and evolution”, SNB Economic Study 2016–10.

Schuldenbericht (2006), “Bericht des Bundesrates über die Schuldentwicklung der öffentlichen Haushalte”, Eidgenössisches Finanzdepartement.

State financial statement (various years), “State financial statement”, Swiss Federal Finance Administration, Bern.

Stein, Jeremy (2012), “Monetary Policy as Financial-Stability Regulation,” *Quarterly Journal of Economics*, 127(1), 57–95.

Swiss National Bank (1960), “Die Begebung von Schatzanweisungen des Bundes 1939 bis 1959”, Statistisches Bureau der SNB.

Swiss National Bank (1966), “Die Begebung von Schatzanweisungen des Bundes von 1960 bis 1965”, Statistisches Bureau der SNB.

Swiss National Bank (1974), “Die Begebung von Schatzanweisungen des Bundes von 1966 bis 1973”, Statistisches Bureau der SNB.

Swiss National Bank (1980), "Die Begebung von Schatzanweisungen des Bundes von 1974 bis 1979", Statistisches Bureau der SNB.

Appendices

Appendix A: Data Sources

Emission Data:

Eidgenossen: Issuance data on Eidgenossen are available from an internal database of the Federal Treasury, containing all issuances from 1848 onwards. The dataset is not complete insofar as partial repayments and early redemptions of bonds indicated in various SFS are not fully reported, affecting the total amount of outstanding debt up to 1969. From 1970 onwards, there were no early redemptions and Eidgenossen were either not partially repaid or, if partially repaid or converted/called, then repayments or conversions were accounted for in the database. This allows us to draw a correct maturity structure of Eidgenossen from 1970 onwards.

Outstanding maturity is calculated based on ex-ante maturity at issuance and does not take into account ex-post effective maturity of callable bonds. A comparison of the two maturities reveals that potential distortions are rather small and do not affect our analysis for two reasons. First, only 59 issues (out of 1,085 issues) with a value of CHF 16.7 billion (out of a total value of CHF 196 billions) were effectively called. A third of these issues were called between 1994 and 1996. The last embedded option was exercised in 2004 (i.e. there are no distortions afterwards). Secondly, even if (speculatively) assuming that bonds with an embedded call option will be called in any case (i.e. using ex-post effective maturity of called bonds), the resulting value-weighted outstanding maturity would be on average only -0.7 years lower (before 2004) and strongly correlated with the initial maturity measure based on issued maturities ($\rho=0.94$).

Emission data collected are validated in different ways. First, the year-end outstanding amount of bonds calculated from emission data is compared and validated with the outstanding amounts reported in the yearly published state financial statements (Staatsrechnung) of the Confederation. Secondly, four publications by the Statistisches Bureau of the SNB allow us to confirm emission data from 1939 to 1979 (see SNB 1959, 1966, 1974, 1980). Later emission data from 1980 onwards is confirmed by archival material and an emission database of the SNB. SIX Information Services also provide some data on emissions from 1970 onwards.

Schatzanweisungen: The four publications by the Statistisches Bureau of the SNB include all emissions of Schatzanweisungen between 1939 and 1979. As Schatzanweisungen were issued by the SNB in the name of the Confederation, these publications are the reference data source available for emission data on Schatzanweisungen, particularly for short-term emissions. This publication ceased after 1979 when GMBF were introduced, while Schatzanweisungen were still issued until 2005. Four further data sources enabled us to harvest emission data after 1979. Despite the cessation of the publication, the Statistical Bureau continued to record data for this publication from 1980 until 1993. This material was found in the archive of the SNB and allows us to cover the years 1983 to 1993 in full. Data was validated by analyzing the State financial statements and the minutes of the Governing Board of the SNB. While there are also data available between 1980 and 1982, these data look incomplete. This may particularly be an issue towards the end of this period, because the frequency of emissions after 1982 was very regular, whereas the frequency of emissions before 1980 was somewhat irregular. Some missing data can be complemented by two additional sources: the minutes of the Board of the SNB and the sources in the Bundesarchiv (the Federal archives). However, it remains an open question as to the extent to which the dataset could be completed using these two sources. Data between 1994 and 2004 were harvested from five further sources. The SIX Information Services provide a

database on emissions that reports Schatzanweisungen between 1997 and January 1999; the SNB's IT services also stored emission data of Schatzanweisungen from 1999 onwards until the last emission issued in 2005; the abovementioned data sources could also be partially validated and complemented by additional data from material archived by an employee of the SNB who worked for the Banking Operations unit during this period; we further used the Staatsrechnung (1994 to 2005) to complement our data with emissions that cross year-ends; and finally, our dataset was complemented by analyzing the minutes of the Governing Board of the SNB. We found no information on any missing emissions.

The emission data of Schatzanweisungen can only be validated by end-of-year data from the balance sheet in the state financial statements. We can thus claim to have harvested a complete set of emissions for Schatzanweisungen with a maturity greater than one year. Furthermore, we have no missing emissions for lower maturities that cross year-ends. We believe that the dataset is near complete, but we cannot guarantee this for maturities lower than one year. This particularly holds true for the years from 1980 to 1982. Some lower maturity emissions of Schatzanweisungen might thus be missing. However, this arguably does not affect any of the variables investigated nor the regression results to any material degree.

GMBF: A complete set of GMBF emission data from 1990 onwards is stored electronically in a database of the SNB. A complete set of emission data from 1979 to 1990 is stored as paper dossiers for each emission in the archive of the SNB.

Other data:

State financial statements data (Staatsrechnung):

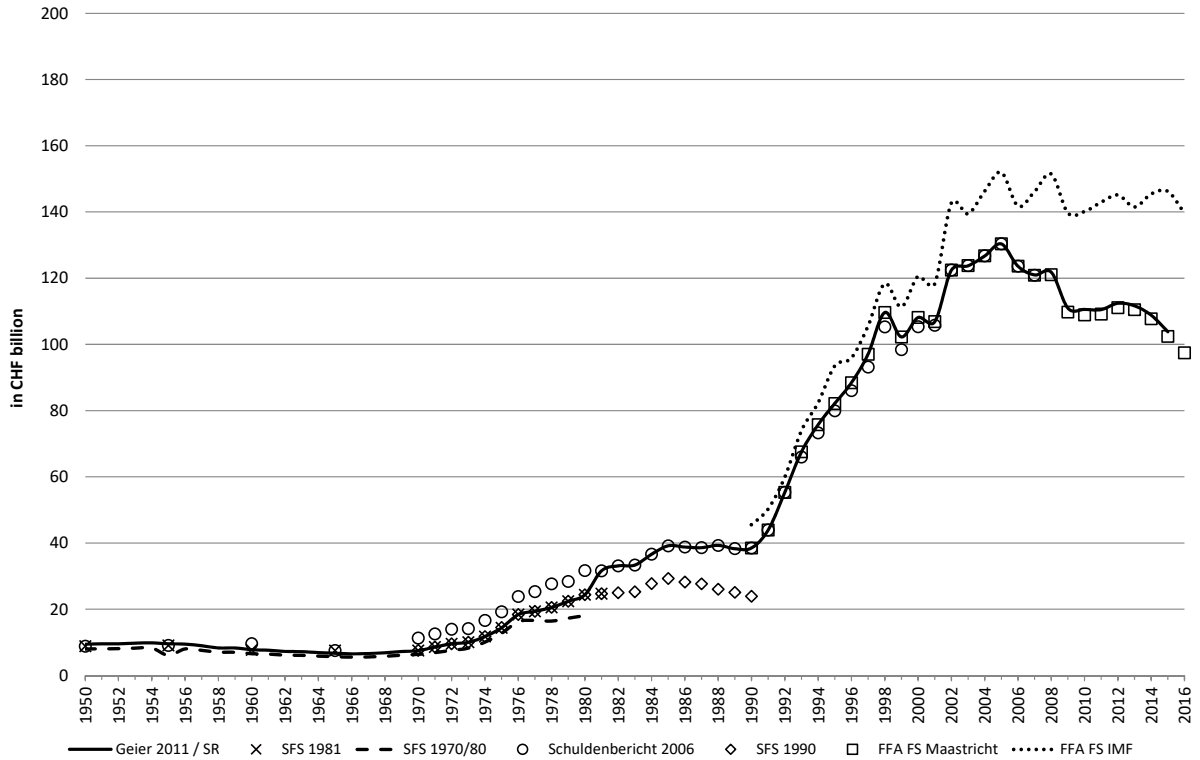
The yearly balance sheet published as part of the state financial statements by the Federal Finance Administration (FFA) is used to validate the emission database. In addition, yearly balance sheet data are also the basis for calculating the central government debt and debt-to-GDP ratios. See below for notes issues regarding different debt definitions. Furthermore, yearly balance sheets allow us to see the structure of the debt, i.e. to differentiate between external (marketable), internal, and other non-marketable debt.

Debt and debt-to-GDP ratio:

As outlined above, the total debt-to-GDP ratio used in this paper is based on yearly balance sheet data, which may differ slightly from other total debt key figures such as total debt according to Maastricht criteria or IMF definitions. In particular, total debt according to the IMF differs substantially from the balance sheet definition of the Confederation. First, the IMF comprises all liabilities and, secondly, liabilities are valued according to their market value. As outlined in Section 2, there were changes in accounting principles and debt definitions over the years, leading to different levels of total debt and total debt-to-GDP ratios as reported in the different state financial statements (SFS). For instance, there was a strong increase in total debt between 1970 and 1980 according to SFS published between 1981 and 1990. After 1990, liabilities against the Confederation's pension fund were included in the debt aggregate. Both the SFS published after 1990 and the Schuldenbericht (2006) retroactively added these liabilities to debt figures back to 1970, leading to higher debt levels between 1970 and 1990. Geier (2011a) uses these data from 1981 onwards, while he relies on SFS 1981 data for 1970 to 1980. However, earlier data (1950–1970) are calculated by correcting SFS 1970/80 to take into account the changes between SFS 1970/80 and SFS 1981. We use the series in Geier (2011a). For the total debt-to-GDP ratio, quarterly and yearly GDP data are obtained from the

State Secretariat of Economic Affairs and the Swiss Federal Statistical Office. Although a GDP revision took place in autumn 2014, we have refrained from using the new series in our first steps for several reasons. First, the revised series primarily shows changes in the level of GDP but not in the trend of GDP. Secondly, the revised data only date back to 1980, which would further reduce our sample size. Figure A1 outlines the differences in debt levels according to the different concepts used in the SFS as well as total debt according to Maastricht and IMF (official figures of the Federal Finance Administration, Financial Statistics).

Figure A1: Different debt definitions



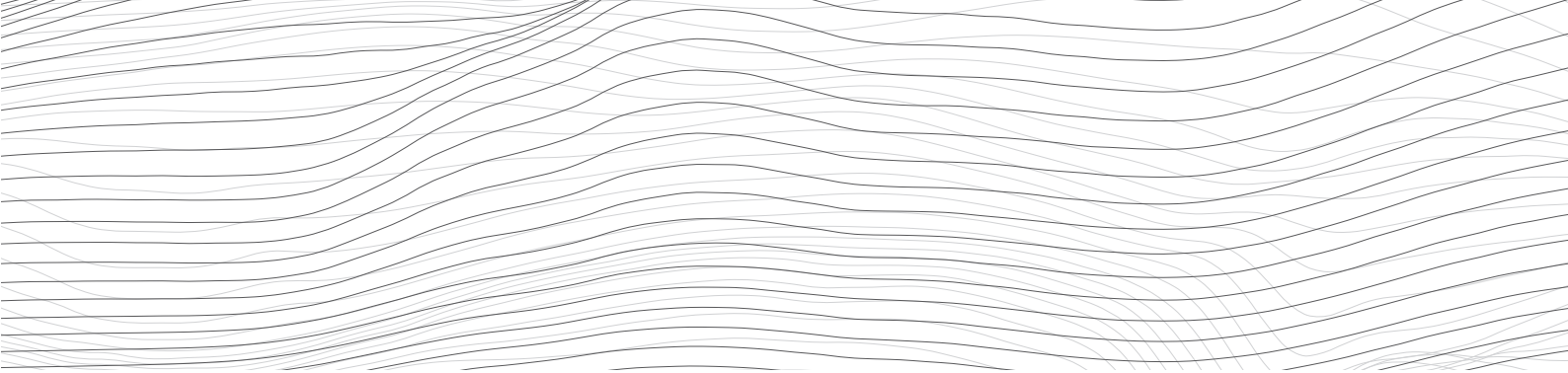
Appendix B: List of abbreviations used

Table 8: List of abbreviations used

abbreviation	unit	description
MD	mn CHF	marketable debt
TD	mn CHF	total debt
M^{out}	days	value-weighted maturity of total outstanding marketable debt
MD^b	mn CHF	value of outstanding bonds
$M^{out,b}$	days	value-weighted maturity of outstanding bonds
SSTD	%	share of short-term marketable debt to overall marketable debt
Libor 3M	%	Swiss franc 3-month Libor rate
Slope 10Y-3M	pp	spread of 10 years interest rate swaps over Swiss franc 3-month Libor rate
MD/GDP	%	marketable debt to GDP ratio
(TD-MD)/GDP	%	non-marketable debt to GDP ratio

Recent SNB Working Papers

- | | | | |
|---------|--|---------|--|
| 2018-7 | Basil Guggenheim, Mario Meichle and Thomas Nellen:
Confederation debt management since 1970 | 2017-14 | David R. Haab, Thomas Nitschka:
Predicting returns on asset markets of a small, open economy and the influence of global risks |
| 2018-6 | Lucas Marc Fuhrer, Basil Guggenheim
and Matthias Jüttner:
What do Swiss franc Libor futures really tell us? | 2017-13 | Mathieu Grob ty:
Government Debt and Growth: The Role of Liquidity |
| 2018-5 | Barth l my Bonadio, Andreas M. Fischer
and Philip Saur :
The speed of exchange rate pass-through | 2017-12 | Thomas Lustenberger and Enzo Rossi:
Does Central Bank Transparency and Communication
Affect Financial and Macroeconomic Forecasts? |
| 2018-4 | Simone Auer, Christian Friedrich, Maja Ganarin,
Teodora Paligorova, and Pascal Towbin:
International Monetary Policy Transmission through
Banks in Small Open Economies | 2017-11 | Andreas M. Fischer, Rafael Greminger and Christian
Grise: Portfolio rebalancing in times of stress |
| 2018-3 | Romain Baeriswyl, Camille Cornand and Bruno Ziliotto:
Observing and shaping the market: the dilemma of
central banks | 2017-10 | Christian Grise and Silvio Schumacher: The response
of long-term yields to negative interest rates: evidence
from Switzerland |
| 2018-2 | Adriel Jost:
Cultural Differences in Monetary Policy Preferences | 2017-9 | Petra Gerlach-Kristen, Richhild Moessner and Rina
Rosenblatt-Wisch: Computing long-term market
inflation expectations for countries without inflation
expectation markets |
| 2018-1 | Reto Foellmi, Adrian Jaeggi and Rina Rosenblatt-Wisch:
Loss Aversion at the Aggregate Level Across Countries
and its Relation to Economic Fundamentals | 2017-8 | Alain Galli: Which indicators matter? Analyzing the
Swiss business cycle using a large-scale mixed-
frequency dynamic factor model |
| 2017-18 | Gregor B urle, Sarah M. Lein and Elizabeth Steiner:
Employment Adjustment and Financial Constraints –
Evidence from Firm-level Data | 2017-7 | Gregor B urle, Matthias Gubler and Diego R. K nzig:
International inflation spillovers - the role of different
shocks |
| 2017-17 | Thomas Lustenberger and Enzo Rossi:
The Social Value of Information:
A Test of a Beauty and Non-Beauty Contest | 2017-6 | Lucas Marc Fuhrer: Liquidity in the Repo Market |
| 2017-16 | Aleksander Berentsen and Benjamin M ller:
A Tale of Fire-Sales and Liquidity Hoarding | | |
| 2017-15 | Adriel Jost:
Is Monetary Policy Too Complex for the Public?
Evidence from the UK | | |



SCHWEIZERISCHE NATIONALBANK
BANQUE NATIONALE SUISSE
BANCA NAZIONALE SVIZZERA
BANCA NAZIUNALA SVIZRA
SWISS NATIONAL BANK

